



# BLONDELLE GAUGES



# Blondelle Pressure Gauge, Ø60, Aluminium, LP



- Class 1
- 'A Lame Acier' unique bellow mechanism, the highest durability and accuracy
- All combinations of refrigerants possible
- Each gauge calibrated individually
- Aluminium case
  
- Admissible overload: 200%
- Possibility to adjust the needle
- Dry or oil filled
- Outlet: vertical or rear
- Fitting: 1/4" SAE or 1/8" NPT

Low Pressure			Reference		Pressure		Refrigerants	
Version	Outlet	Fitting	Case	Dial	psi	bar		
Dry	Vertical	1/4" SAE	MA0601V14S					
	Rear	1/8" NPT	MA0601V18B					
Oil filled	Vertical	1/4" SAE	MA0601A14S					
		1/8" NPT	MA0601A18B					
	Rear	1/4" SAE	MA1001V14S					
		1/8" NPT	MA1001V18B					
	Rear	1/4" SAE	MA1001A14S					
		1/8" NPT	MA1001A18B					
					1001		-1+10	R507+R404A+R407Cvap/liq
					1003		-1+10	R404A+R407Cvap/liq+R134a
					1005		-1+10	R134a+R407Cvap/liq
					1015		-1+30	R744
					1017		-1+20	R410A
					1023		-1+20	R410A+R22+R134a+R407C
					1031		-1+20	R407Cvap/liq+R410A
					1035		-1+20	R134a+R404A+R410A+R22
					1037		-1+20	R407Cvap/liq+R410A+R22
					1123		-1+20	R134a+R404A+R407C+R410A
					1137		-1+10	R417Avap/liq+R422Dvap/liq
					1143		-1+10	R290+R600a
				1227		-1+10	R422D	
				2003		-1+10	R134a+R404A+R507	
			2005		-1+10	R508B		
			2009		-1+10	R22+R507+R407Fvap		
			2011		-1+10	R22+R407Cvap/liq		
			2013		-1+10	R407Avap/liq+R407Fvap/liq		
			2015		-1+20	R32+R410A		
			2019		-1+10	R134a+R507+R407F		
			2025		-1+10	R134a+R404A+R407C+R407F		
			2027		-1+10	R134a+R404A+R407F		
			2029		-1+10	R449A		
			2031		-1+10	R427		
			2033		-1+10	R448A+R449A		
			2035		-1+20	R32+R410A+R134a+R407C		
			2037		-1+10	R452a+R404A+R134a		
			2039		-1+10	R134a+R404A+R450A+R407F		
			2041		-1+10	R448A+R449A+R407F		
			2043		-1+10	R1234yf+R1234ze+R134a		
			2045		-1+20	R32+R410A+R407C		
			2049		-1+10	R452A+R513A		
			2051		-1+20	R32		
			2053		-1+10	R449A+R450A+R452A+R513A		
			2057		-1+10	R448A+R449A+R450A+R452A		
			2059		-1+20	R290		
			2061		-1+10	R404A+R407F+R448A		
			2063		-1+10	R448A+R449A+R452A+R404A		
			2065		-1+10	R134A+R404A+R449A+R507A		
			2067		-1+10	R442A+R452A		
			2069		-1+10	R407Cvap/liq		
			2071		-1+10	R134A+R513a		
			2073		-1+10	R134a+R404A+R448A+R452A		
			2075		-1+10	R134a+R448A+R452A+R455A		
			2077		-1+10	R454C		
			2079		-1+20	R134a+R513A+R410A+R448A		
			2081		-1+20	R407Cvap/liq		
			2083		-1+10	R407C+R449A+R407F+R134a		
			2085		-1+10	R515B+R1234yf+R1234ze+R134a		
			2089		-1+10	R134a+R450A+R513A		



Low Pressure			Reference		Pressure		Refrigerants	
Version	Outlet	Fitting	Case	Dial	psi	bar		
Dry	Vertical	1/4" SAE	MA0601V14S					
		1/8" NPT	MA0601V18B					
Oil filled	Rear	1/4" SAE	MA0601A14S					
		1/8" NPT	MA0601A18B					
	Vertical	1/4" SAE	MA1001V14S					
		1/8" NPT	MA1001V18B					
	Rear	1/4" SAE	MA1001A14S					
		1/8" NPT	MA1001A18B					
				5992		-30+140	-1+10	R12+R22+R502
				6060		-30+140	-1+10	R134a
				6070			-1+10	R12+R22+R502
				6125		-30+140	-1+10	R22+R134a
				6171			-1+10	R134a
				6186			-1+10	R22+R134a
				6685			-1+10	R134a+R404A
				6702		-30+140	-1+10	R134a+R404A
			7074			-1+10	R22+R134a+R404A	
			7076		-30+140	-1+10	R22+R134a+R404A	
			7126		-30+140	-1+10	R290+R600A	
			7216			-1+10	R134a+R404A+R507+R407C	
			7272			-1+10	R22+R134a+R407C	
			7290			-1+10	R23	
			7345			-1+10	R134a+R404A+R22+R407C	
			7366			-1+10	R407Cvap/liq	
			7496			-1+10	R507+R407Cvap/liq	
			7540			-1+10	R134a+R22+R407Cvap/liq	
			7552			-1+10	R134a+R22+R404A+R507	
			8006			-1+20	R410A	

Version	Outlet	Fitting	Reference		Pressure		Refrigerant
			Case	Dial	psi	bar	
Oil filled	Vertical	1/4" SAE	MA0501V14S				
		1/8" NPT	MA0501V18B				
	Rear	1/4" SAE	MA0501A14S				
		1/8" NPT	MA0501A18B				
				0010			0+10
				6355			0+16
				0030			0+30
			2055			-1+45	
			2056			-1+50	

How to read the tables? The complete designation of a pressure gauge comprises the reference of the casing, followed by the reference of the dial. E.g.: Pressure gauge diameter 60mm aluminium, oil filled, rear outlet, 1/4"SAE, -1+10bar / R134a+R404A+R407F, Case: MA1001A14S; Dial: 2027; Reference: MA1001A14S-2027

# Blondelle Pressure Gauge, Ø60, Aluminium, HP



- Class 1
- 'A Lame Acier' unique bellow mechanism, the highest durability and accuracy
- All combinations of refrigerants possible
- Each gauge calibrated individually
- Aluminium case
  
- Admissible overload: 200%
- Possibility to adjust the needle
- Dry or oil filled
- Outlet: vertical or rear
- Fitting: 1/4" SAE or 1/8" NPT

High Pressure			Reference		Pressure		Refrigerants				
Version	Outlet	Fitting	Case	Dial	psi	bar					
Dry	Vertical	1/4" SAE	MA0601V14S		-30+650						
		1/8" NPT	MA0601V18B								
Oil filled	Rear	1/4" SAE	MA0601A14S								
		1/8" NPT	MA0601A18B								
Oil filled	Vertical	1/4" SAE	MA1001V14S								
		1/8" NPT	MA1001V18B								
Oil filled	Rear	1/4" SAE	MA1001A14S								
		1/8" NPT	MA1001A18B								
								1002		-1+30	R507+R404A+R407Cvap/liq
								1004		-1+30	R404A+R407Cvap/liq+R134a
								1006		-1+30	R134a+R407Cvap/liq
								1018		-1+45	R410A
								1024		-1+45	R410A+R22+R134a+R407C
								1029		-1+50	R744
								1032		-1+45	R407Cvap/liq+R410A
								1036		-1+45	R134a+R404A+R410A+R22
								1038		-1+45	R407Cvap/liq+R410A+R22
								1124		-1+45	R134a+R404A+R407C+R410A
								1138		-1+30	R417Avap/liq+R422Dvap/liq
								1144		-1+30	R290+R600a
				1228		-1+30	R422D				
				2004		-1+30	R134a+R404A+R507				
				2006		-1+30	R508B				
				2010		-1+30	R22+R507+R407Fvap				
				2012		-1+30	R22+R407Cvap/liq				
				2014		-1+30	R407Avap/liq+R407Fvap/liq				
				2016		-1+45	R32+R410A				
				2020		-1+30	R134a+R507+R407F				
				2026		-1+30	R134a+R404A+R407C+R407F				
				2028		-1+30	R134a+R404A+R407F				
				2030		-1+30	R449A				
				2032		-1+30	R427				
				2034		-1+30	R448A+R449A				
				2036		-1+45	R32+R410A+R134a+R407C				
				2038		-1+30	R452a+R404A+R134a				
				2040		-1+30	R134a+R404A+R450A+R407F				
				2042		-1+30	R448A+R449A+R407F				
				2044		-1+30	R1234yf+R1234ze+R134a				
				2046		-1+45	R32+R410A+R407C				
				2050		-1+30	R452A+R513A				
				2052		-1+45	R32				
				2054		-1+30	R449A+R450A+R452A+R513A				
				2058		-1+30	R448A+R449A+R450A+R452A				
				2060		-1+30	R290				
				2062		-1+30	R404A+R407F+R448A				
				2064		-1+30	R448A+R449A+R452A+R404A				
				2066		-1+30	R134A+R404A+R449A+R507A				
				2068		-1+30	R442A+R452A				
				2070							
				2072		-1+30	R134A+R513a				
				2074		-1+30	R134a+R404A+R448A+R452A				
				2076		-1+30	R134a+R448A+R452A+R455A				
				2078		-1+30	R454C				
				2080		-1+45	R134a+R513A+R410A+R448A				
				2084		-1+30	R407C+R449A+R407F+R134a				
				2086		-1+30	R515B+R1234yf+R1234ze+R134a				
				2089		-1+30	R134a+R450A+R513A				



High Pressure			Reference		Pressure		Refrigerants				
Version	Outlet	Fitting	Case	Dial	psi	bar					
Dry	Vertical	1/4" SAE	MA0601V14S								
		1/8" NPT	MA0601V18B								
Oil filled	Rear	1/4" SAE	MA0601A14S								
		1/8" NPT	MA0601A18B								
Vertical	Rear	1/4" SAE	MA1001V14S								
		1/8" NPT	MA1001V18B								
Rear	Rear	1/4" SAE	MA1001A14S								
		1/8" NPT	MA1001A18B								
								5993	-30+400	-1+30	R12+R22+R502
								6061	-30+400	-1+30	R134a
								6071		-1+30	R12+R22+R502
								6126	-30+400	-1+30	R22+R134a
								6175		-1+30	R134a
								6188		-1+30	R22+R134a
								6686		-1+30	R134a+R404A
								6703	-30+400	-1+30	R134a+R404A
								7075		-1+30	R22+R134a+R404A
								7077	-30+400	-1+30	R22+R134a+R404A
								7127	-30+400	-1+30	R290+R600A
								7217		-1+30	R134a+R404A+R507+R407C
				7273		-1+30	R22+R134a+R407C				
				7291		-1+30	R23				
				7346		-1+30	R134a+R404A+R22+R407C				
				7367		-1+30	R407Cvap/liq				
				7497		-1+30	R507+R407Cvap/liq				
				7541		-1+30	R134a+R22+R407Cvap/liq				
				7553		-1+30	R134a+R22+R404A+R507				
				8007		-1+45	R410A				

Version	Outlet	Fitting	Reference		Pressure		Refrigerant			
			Case	Dial	psi	bar				
Oil filled	Vertical	1/4" SAE	MA0501V14S							
		1/8" NPT	MA0501V18B							
	Rear	1/4" SAE	MA0501A14S							
		1/8" NPT	MA0501A18B							
									0010	0+10
									6355	0+16
									0030	0+30
				2055	-1+45					
				2056	-1+50					

How to read the tables? The complete designation of a pressure gauge comprises the reference of the casing, followed by the reference of the dial. E.g.: Pressure gauge diameter 60mm aluminium, oil filled, rear outlet, 1/4"SAE, -1+10bar / R134a+R404A+R407F, Case: MA1001A14S; Dial: 2027; Reference: MA1001A14S-2027

# Blondelle Pressure Gauge, Ø 60, Composite, LP



- Class 1
- 'A Lame Acier' unique bellow mechanism, the highest durability and accuracy
- All combinations of refrigerants possible
- Each gauge calibrated individually
- high quality composite casing
  
- Admissible overload: 200%
- Possibility to adjust the needle
- Dry or oil filled
- Outlet: vertical or rear
- Fitting: 1/4" SAE or 1/8" NPT

Low Pressure			Reference		Pressure		Refrigerants
Version	Outlet	Fitting	Case	Dial	psi	bar	
Dry	Vertical	1/4" SAE	MA0602V14S				
	Rear	1/8" NPT	MA0602V18B				
Oil filled	Vertical	1/4" SAE	MA0602A14S				
	Rear	1/8" NPT	MA0602A18B				
				1001		-1+10	R507+R404A+R407Cvap/liq
				1003		-1+10	R404A+R407Cvap/liq+R134a
				1005		-1+10	R134a+R407Cvap/liq
				1015		-1+30	R744
				1017	-30+290	-1+20	R410A
				1023		-1+20	R410A+R22+R134a+R407C
				1031		-1+20	R407Cvap/liq+R410A
				1035		-1+20	R134a+R404A+R410A+R22
				1037		-1+20	R407Cvap/liq+R410A+R22
				1123		-1+20	R134a+R404A+R407C+R410A
				1137		-1+10	R417Avap/liq+R422Dvap/liq
				1143		-1+10	R290+R600a
				1227		-1+10	R422D
				2003		-1+10	R134a+R404A+R507
				2005		-1+10	R508B
				2009		-1+10	R22+R507+R407Fvap
				2011		-1+10	R22+R407Cvap/liq
				2013		-1+10	R407Avap/liq+R407Fvap/liq
				2015		-1+20	R32+R410A
				2019		-1+10	R134a+R507+R407F
				2025		-1+10	R134a+R404A+R407C+R407F
				2027		-1+10	R134a+R404A+R407F
				2029		-1+10	R449A
				2031		-1+10	R427
				2033		-1+10	R448A+R449A
				2035		-1+20	R32+R410A+R134a+R407C
				2037		-1+10	R452a+R404A+R134a
				2039		-1+10	R134a+R404A+R450A+R407F
				2041		-1+10	R448A+R449A+R407F
				2043		-1+10	R1234yf+R1234ze+R134a
				2045		-1+20	R32+R410A+R407C
				2049		-1+10	R452A+R513A
				2051		-1+20	R32
				2053		-1+10	R449A+R450A+R452A+R513A
				2057		-1+10	R448A+R449A+R450A+R452A
				2059		-1+20	R290
				2061		-1+10	R404A+R407F+R448A
				2063		-1+10	R448A+R449A+R452A+R404A
				2065		-1+10	R134A+R404A+R449A+R507A
				2067		-1+10	R442A+R452A
				2069		-1+10	R407Cvap/liq
				2071		-1+10	R134A+R513a
				2073		-1+10	R134a+R404A+R448A+R452A
				2075		-1+10	R134a+R448A+R452A+R455A
				2077		-1+10	R454C
				2079		-1+20	R134a+R513A+R410A+R448A
				2081		-1+20	R407Cvap/liq
				2083		-1+10	R407C+R449A+R407F+R134a
				2085		-1+10	R515B+R1234yf+R1234ze+R134a
				2089		-1+10	R134a+R450A+R513A



Low Pressure			Reference		Pressure		Refrigerants	
Version	Outlet	Fitting	Case	Dial	psi	bar		
Dry	Vertical	1/4" SAE	MA0602V14S					
		1/8" NPT	MA0602V18B					
Oil filled	Rear	1/4" SAE	MA0602A14S					
		1/8" NPT	MA0602A18B					
	Vertical	1/4" SAE	MA1002V14S					
		1/8" NPT	MA1002V18B					
	Rear	1/4" SAE	MA1002A14S					
		1/8" NPT	MA1002A18B					
				5992		-30+140	-1+10	R12+R22+R502
				6060		-30+140	-1+10	R134a
				6070			-1+10	R12+R22+R502
				6125		-30+140	-1+10	R22+R134a
			6171			-1+10	R134a	
			6186			-1+10	R22+R134a	
			6685			-1+10	R134a+R404A	
			6702		-30+140	-1+10	R134a+R404A	
			7074			-1+10	R22+R134a+R404A	
			7076		-30+140	-1+10	R22+R134a+R404A	
			7126		-30+140	-1+10	R290+R600A	
			7216			-1+10	R134a+R404A+R507+R407C	
			7272			-1+10	R22+R134a+R407C	
			7290			-1+10	R23	
			7345			-1+10	R134a+R404A+R22+R407C	
			7366			-1+10	R407Cvap/liq	
			7496			-1+10	R507+R407Cvap/liq	
			7540			-1+10	R134a+R22+R407Cvap/liq	
			7552			-1+10	R134a+R22+R404A+R507	
			8006			-1+20	R410A	

Version	Outlet	Fitting	Reference		Pressure		Refrigerant
			Case	Dial	psi	bar	
Oil filled	Vertical	1/4" SAE	MA0502V14S				
		1/8" NPT	MA0502V18B				
	Rear	1/4" SAE	MA0502A14S				
		1/8" NPT	MA0502A18B				
				0010			0+10
				6355			0+16
			0030			0+30	
			2055			-1+45	
			2056			-1+50	

How to read the tables? The complete designation of a pressure gauge comprises the reference of the casing, followed by the reference of the dial. E.g.: Pressure gauge diameter 60mm composite, oil filled, rear outlet, 1/4"SAE, -1+10bar / R134a+R404A+R407F, Case: MA1002A14S; Dial: 2027; Reference: MA1002A14S-2027

# Blondelle Pressure Gauge, Ø 60, Composite, HP



- Class 1
- 'A Lame Acier' unique bellow mechanism, the highest durability and accuracy
- All combinations of refrigerants possible
- Each gauge calibrated individually
- high quality composite casing
  
- Admissible overload: 200%
- Possibility to adjust the needle
- Dry or oil filled
- Outlet: vertical or rear
- Fitting: 1/4" SAE or 1/8" NPT

High Pressure			Reference		Pressure		Refrigerants
Version	Outlet	Fitting	Case	Dial	psi	bar	
Dry	Vertical	1/4" SAE	MA0602V14S		-30+650		
	Rear	1/8" NPT	MA0602V18B				
Oil filled	Vertical	1/4" SAE	MA0602A14S				
		1/8" NPT	MA0602A18B				
	Rear	1/4" SAE	MA1002V14S				
		1/8" NPT	MA1002V18B				
	Rear	1/4" SAE	MA1002A14S				
		1/8" NPT	MA1002A18B				
		1002					
		1004					
		1006					
		1018					
1024							
1029							
1032							
1036							
1038							
1124							
1138							
1144							
1228							
2004							
2006							
2010							
2012							
2014							
2016							
2020							
2026							
2028							
2030							
2032							
2034							
2036							
2038							
2040							
2042							
2044							
2046							
2050							
2052							
2054							
2058							
2060							
2062							
2064							
2066							
2068							
2072							
2074							
2076							
2078							
2080							
2084							
2086							
2089							
							R507+R404A+R407Cvap/liq
							R404A+R407Cvap/liq+R134a
							R134a+R407Cvap/liq
							R410A
							R410A+R22+R134a+R407C
							R744
							R407Cvap/liq+R410A
							R134a+R404A+R410A+R22
							R407Cvap/liq+R410A+R22
							R134a+R404A+R407C+R410A
							R417Avap/liq+R422Dvap/liq
							R290+R600a
							R422D
							R134a+R404A+R507
							R508B
							R22+R507+R407Fvap
							R22+R407Cvap/liq
							R407Avap/liq+R407Fvap/liq
							R32+R410A
							R134a+R507+R407F
							R134a+R404A+R407C+R407F
							R134a+R404A+R407F
							R449A
							R427
							R448A+R449A
							R32+R410A+R134a+R407C
							R452a+R404A+R134a
							R134a+R404A+R450A+R407F
							R448A+R449A+R407F
							R1234yf+R1234ze+R134a
							R32+R410A+R407C
							R452A+R513A
							R32
							R449A+R450A+R452A+R513A
							R448A+R449A+R450A+R452A
							R290
							R404A+R407F+R448A
							R448A+R449A+R452A+R404A
							R134A+R404A+R449A+R507A
							R442A+R452A
							R134A+R513a
							R134a+R404A+R448A+R452A
							R134a+R448A+R452A+R455A
							R454C
							R134a+R513A+R410A+R448A
							R407C+R449A+R407F+R134a
							R515B+R1234yf+R1234ze+R134a
							R134a+R450A+R513A





High Pressure			Reference		Pressure		Refrigerants				
Version	Outlet	Fitting	Case	Dial	psi	bar					
Dry	Vertical	1/4" SAE	MA0602V14S								
		1/8" NPT	MA0602V18B								
Oil filled	Rear	1/4" SAE	MA0602A14S								
		1/8" NPT	MA0602A18B								
Vertical	Rear	1/4" SAE	MA1002V14S								
		1/8" NPT	MA1002V18B								
Rear	Rear	1/4" SAE	MA1002A14S								
		1/8" NPT	MA1002A18B								
								5993	-30+400	-1+30	R12+R22+R502
								6061	-30+400	-1+30	R134a
								6071		-1+30	R12+R22+R502
								6126	-30+400	-1+30	R22+R134a
								6175		-1+30	R134a
								6188		-1+30	R22+R134a
								6686		-1+30	R134a+R404A
								6703	-30+400	-1+30	R134a+R404A
								7075		-1+30	R22+R134a+R404A
								7077	-30+400	-1+30	R22+R134a+R404A
								7127	-30+400	-1+30	R290+R600A
								7217		-1+30	R134a+R404A+R507+R407C
				7273		-1+30	R22+R134a+R407C				
				7291		-1+30	R23				
				7346		-1+30	R134a+R404A+R22+R407C				
				7367		-1+30	R407Cvap/liq				
				7497		-1+30	R507+R407Cvap/liq				
				7541		-1+30	R134a+R22+R407Cvap/liq				
				7553		-1+30	R134a+R22+R404A+R507				
				8007		-1+45	R410A				

High Pressure			Reference		Pressure		Refrigerant			
Version	Outlet	Fitting	Case	Dial	psi	bar				
Oil filled	Vertical	1/4" SAE	MA0502V14S							
		1/8" NPT	MA0502V18B							
Rear	Rear	1/4" SAE	MA0502A14S							
		1/8" NPT	MA0502A18B							
								0010		0+10
								6355		0+16
								0030		0+30
								2055		-1+45
								2056		-1+50

How to read the tables? The complete designation of a pressure gauge comprises the reference of the casing, followed by the reference of the dial. E.g.: Pressure gauge diameter 60mm composite, oil filled, rear outlet, 1/4"SAE, -1+10bar / R134a+R404A+R407F, Case: MA1002A14S; Dial: 2027; Reference: MA1002A14S-2027



# Blondelle Pressure Gauge, Ø 80, Composite, LP p.1/2



- Class 1
- 'A Lame Acier' unique bellow mechanism, the highest durability and accuracy
- All combinations of refrigerants possible
- Each gauge calibrated individually, Possibility to adjust the needle
  
- High quality composite casing
- Admissible overload: 200%
- Dry , oil filled or pulse-free
- Outlet: vertical or rear, fitting: 1/4" SAE or 1/8" NPT

Low Pressure Version	Outlet	Fitting	Reference Case	Dial	Pressure		Refrigerants
					psi	bar	
Dry	Vertical	1/4" SAE	MA0603V14S				
		1/4" GAZ	MA0603V14G				
		1/8" NPT	MA0603V18B				
	Rear	1/4" SAE	MA0603A14S				
		1/4" GAZ	MA0603A14G				
		1/8" NPT	MA0603A18B				
Oil filled	Vertical	1/4" SAE	MA1003V14S				
		1/4" GAZ	MA1003V14G				
		1/8" NPT	MA1003V18B				
	Rear	1/4" SAE	MA1003A14S				
		1/4" GAZ	MA1003A14G				
		1/8" NPT	MA1003A18B				
Pulse-free	Vertical	1/4" SAE	MA0901V14S				
		1/4" GAZ	MA0901V14G				
		1/8" NPT	MA0901V18B				
	Rear	1/4" SAE	MA0901A14S				
		1/4" GAZ	MA0901A14G				
		1/8" NPT	MA0901A18B				
				1051		-1+10	R507+R404A+R407Cvap/liq
				1055		-1+10	R22+R417vap/liq
				1057	-30+400		R22+R410A (°F)
				1065		-1+30	R744
				1067		-1+10	R1270
				1073		-1+20	R410A+R22+R134a+R407C
				1085		-1+20	R134a+R404A+R410A+R22
				1087		-1+20	R407Cvap/liq+R410A+R22
				1099		-1+80	R744 (Transcritical)
				1155		-1+100	R744 (Transcritical)
				1173		-1+20	R410A+R407C+R404A+R134a
				1179		-1+10	R422D+R422A+R417A
				3001		-1+20	R422D
				3003		-1+10	R134a+R404A+R407F
				3005		-1+10	R22+R290+R600A
				3009	-30+1200	-1+80	R744 (Transcritical)
				3012		-1+10	R422D
				3013		-1+20	R32
				3023		-1+10	R404A+R407A+R407F
				3025		-1+10	R1234yf+R134a+R1234ze
				3027		-1+20	R134a+R410A+R407C+R407F
				3029		-1+10	R134a+R404A+R407C+R407F
				3031		-1+20	R407A
				3033		-1+10	R404A+R407A+R407F+R449A
				3037		-1+20	R449A
				3039		-1+10	R434a
				3041		-1+10	R134a+R404A+R407A+R407F
				3043		-1+20	R32+R410A
				3045		-1+10	R404A+R508B
				3049		-1+10	R1234yf+R1234ze
				3053		-1+10	R290+R134a+R407C+R404A
				3055		-1+20	R448A+R449A
				3057		-1+10	R134a+R404A+R22+R449A
				3059		-1+20	R32+R410A+R134a+R407C
				3061		-1+20	R452a
				3063		-1+10	R134a+R404A+R407F+R449A
				3067		-1+10	R404A+R134a+R449A+R407C
				3069		-1+10	R448A+R449A+R407F
				3071		-1+10	R134a+R404A+R407F+R407C
				3073		-1+10	R452a+R404A+R134a
				3077		-1+20	R32+R410A+R407C+R404A
				3079		-1+20	R32+R410A+R407C
				3081		-1+10	R236fa+R227ea
				3083	-30+435	-1+30	R744
				3085		-1+20	R1234yf+R1234ze+R410A+R134a
				3087		-1+20	R448A+R449A+R450A+R407F
				3089		-1+20	R134a+R404A+R507A+R407C
				3091		-1+10	R448A+R449A+R450A+R407F
				3093		-1+10	R448A+R449A+R450A+R452A
				3095		-1+10	R449Avap/liq+R448Avap/liq



Low Pressure Version	Outlet	Fitting	Reference		Pressure		Refrigerants
			Case	Dial	psi	bar	
Dry	Vertical	1/4" SAE	MA0603V14S				
		1/4" GAZ	MA0603V14G				
		1/8" NPT	MA0603V18B				
	Rear	1/4" SAE	MA0603A14S				
		1/4" GAZ	MA0603A14G				
		1/8" NPT	MA0603A18B				
Oil filled	Vertical	1/4" SAE	MA1003V14S				
		1/4" GAZ	MA1003V14G				
		1/8" NPT	MA1003V18B				
	Rear	1/4" SAE	MA1003A14S				
		1/4" GAZ	MA1003A14G				
		1/8" NPT	MA1003A18B				
Pulse-free	Vertical	1/4" SAE	MA0901V14S				
		1/4" GAZ	MA0901V14G				
		1/8" NPT	MA0901V18B				
	Rear	1/4" SAE	MA0901A14S				
		1/4" GAZ	MA0901A14G				
		1/8" NPT	MA0901A18B				
				3097		-1+10	R404A+R449A+R452A+R134a
				3099		-1+10	R449A+R452+R513+1234yf
				3101		-1+10	R449A+R450A+R452A+R513A
				3103		-1+20	R449Avap/liq+R448Avap/liq
				3105		-1+20	R407A+R449A+R410A
				3107		-1+10	R448A+R449A+R452A+R455A
				3109		-1+20	R410A+R134a+R407C
				3111		-1+20	R32+R410A+R407C
				3113		-1+10	R404A+R448A+R449A+R134a
				3115		-1+20	R449A+R450A+R452A+R513A
				3117		-1+10	R1234yf+R134a+R407C+R513A
				3119		-1+20	R404A+R452A+R134a+R410A
				3121	-30+290	-1+20	R32+R290+R600a
				3123		-1+20	R410A+R404A+R448A+R134a
				3125		-1+10	R442A+R134a+R404A
				3127		-1+10	R449A
				3129	-30+140	-1+10	R1234yf+R134a+R513A
				3131		-1+10	R134a+R404A+R449A+R448A+R452A
				3133		-1+10	R1234yf+R32+R407C+R134a
				3137	-30+140	-1+10	R22+R290+R600A
				3139		-1+20	R449A+R452A+R32+R134a
				3141		-1+10	R404A+R407F+R448A+R449A
				3143		-1+20	R449A+R410A+R32+R134a
				3145		-1+10	R1234yf+R1234ze+R134a+R513A
				3147		-1+10	R14+R23
				3149		-1+10	R134a+R448A+R452A+R455A
				3151		-1+10	R134a+R404A+R448A+R452A
				3153	-30+140	-1+10	R1234yf+R1234ze+R134a
				3155		-1+10	R290+R22+R134a
				3157		-1+10	R134a+R404A+R452A+R453A
				3159		-1+10	R134a+R450A+R452A+R513A
				3161		-1+10	R448A+R449A+R450A+R513A
				3165		-1+10	R245fa
				3167		-1+20	R410A+R454B
				3169		-1+20	R410A+R404A+R449A+R134a
				3173		-1+20	R449A+R455A+R32+R410A
				3175		-1+10	R449A+R452A+R513A+R404A
				3177		-1+20	R32+R134a+R407C+R404A
				3179		-1+10	R513A
				3181		-1+10	R454C
				3183		-1+10	R290+R454C+R455A+R1234yf
				3185		-1+10	R404A+R455Avap/liq+R454Cvap/liq
				3187		-1+10	R1234yf+R134a+R450A+R513A
				3189		-1+10	R1233zd(E)
				3191		-1+10	R134a+R407C+R513A
				3193		-1+10	R134a+R448A+R513A+R407C
				3195		-1+10	R452a
				3197		-1+10	R454A+R454B+R454C+R404A
				3199		-1+10	R1234yf+R1234ze+R454C+R455A
				3201		-1+10	R32+R404A+R410A+R134a
				3203		-1+10	R452B
				3205		-1+10	R404A+R449A+R513A+R134a
				3207		-1+10	R404A+R448A+R449A+R455A
				3209		-1+10	R422Dvap/liq+R22

How to read the tables? The complete designation of a pressure gauge comprises the reference of the casing, followed by the reference of the dial. E.g.: Pressure gauge diameter 80mm composite, oil-filled, vertical outlet, 1/8"NPT, -1+45bar / R407C+R410A+R22: Case: MA1003V18B; Dial: 1088; Reference: MA1003V18B-1088

# Blondelle Pressure Gauge, Ø 80, Composite, LP p.2/2



- Class 1
- 'A Lame Acier' unique bellow mechanism, the highest durability and accuracy
- All combinations of refrigerants possible
- Each gauge calibrated individually, Possibility to adjust the needle
  
- High quality composite casing
- Admissible overload: 200%
- Dry , oil filled or pulse-free
- Outlet: vertical or rear, fitting: 1/4" SAE or 1/8" NPT

Low Pressure Version	Outlet	Fitting	Reference Case	Dial	Pressure		Refrigerants
					psi	bar	
Dry	Vertical	1/4" SAE	MA0603V14S				
		1/4" GAZ	MA0603V14G				
		1/8" NPT	MA0603V18B				
	Rear	1/4" SAE	MA0603A14S				
		1/4" GAZ	MA0603A14G				
		1/8" NPT	MA0603A18B				
Oil filled	Vertical	1/4" SAE	MA1003V14S				
		1/4" GAZ	MA1003V14G				
		1/8" NPT	MA1003V18B				
	Rear	1/4" SAE	MA1003A14S				
		1/4" GAZ	MA1003A14G				
		1/8" NPT	MA1003A18B				
Pulse-free	Vertical	1/4" SAE	MA0901V14S				
		1/4" GAZ	MA0901V14G				
		1/8" NPT	MA0901V18B				
	Rear	1/4" SAE	MA0901A14S				
		1/4" GAZ	MA0901A14G				
		1/8" NPT	MA0901A18B				
				4090		-1+10	R409A
				4092		-1+10	R134a+R22+R409Avap/liq
				5941	-30+140	-1+10	R12+R22+R502
				6072		-1+10	R12+R22+R502
				6127	-30+140	-1+10	R22+R134a
				6172		-1+10	R134a
				6187		-1+10	R22+R134a
				6607	-30+140	-1+10	R134a
				6630		-1+10	R134a+R404A
				6704	-30+140	-1+10	R134a+R404A
				7130	-30+140	-1+10	R290+R600A
				7279		-1+10	R23
				7309		-1+10	R134a+R404A+R507+R407C
				7312		-1+10	R134a+R22+R404A
				7314	-30+140	-1+10	R134a+R22+R404A
				7341		-1+10	R134a+R404A+R22+R407C
				7524		-1+20	R410A
				7526		-1+10	R134a+R404A+R407Cvap/liq
				7528		-1+5	R600A+Care 30vap/liq
				7530		-1+10	R290+Care 50vap/liq
				7542		-1+10	R134a+R22+R407Cvap/liq
				7554		-1+10	R134a+R22+R404A+R507
				7734		-1+10	R22+R407Cvap/liq
				7805	-30+145		R22+R134a+R404A (°F)
				8101	-30+145		R12+R22+R502 (°F)
				8137	-30+400		R410A (°F)
				8264		-1+10	R134a+R407Cvap/liq



Version	Outlet	Fitting	Reference		Pressure		Refrigerants
			Case	Dial	psi	bar	
Oil filled	Vertical	1/4" SAE	MA0503V14S				
		1/8" NPT	MA0503V18B				
	Rear	1/4" SAE	MA0503A14S				
		1/8" NPT	MA0503A18B				
				6364			0+16
				8010			0+10
				3171	-30+290		-1+20
				8030			0+30
			3136	-30+650		-1+45	
			3135			-1+50	
			3163			-1+60	

How to read the tables? The complete designation of a pressure gauge comprises the reference of the casing, followed by the reference of the dial. E.g.: Pressure gauge diameter 80mm composite, oil-filled, vertical outlet, 1/8"NPT, -1+45bar / R407C+R410A+R22: Case: MA1003V18B; Dial: 1088; Reference: MA1003V18B-1088

# Blondelle Pressure Gauge, Ø 80, Composite, HP p.1/2



- Class 1
- 'A Lame Acier' unique bellow mechanism, the highest durability and accuracy
- All combinations of refrigerants possible
- Each gauge calibrated individually, Possibility to adjust the needle
  
- High quality composite casing
- Admissible overload: 200%
- Dry , oil filled or pulse-free
- Outlet: vertical or rear, fitting: 1/4" SAE or 1/8" NPT

High Pressure Version	Outlet	Fitting	Reference Case	Dial	Pressure		Refrigerants
					psi	bar	
Dry	Vertical	1/4" SAE	MA0603V14S				
		1/4" GAZ	MA0603V14G				
		1/8" NPT	MA0603V18B				
	Rear	1/4" SAE	MA0603A14S				
		1/4" GAZ	MA0603A14G				
		1/8" NPT	MA0603A18B				
Oil filled	Vertical	1/4" SAE	MA1003V14S				
		1/4" GAZ	MA1003V14G				
		1/8" NPT	MA1003V18B				
	Rear	1/4" SAE	MA1003A14S				
		1/4" GAZ	MA1003A14G				
		1/8" NPT	MA1003A18B				
Pulse-free	Vertical	1/4" SAE	MA0901V14S				
		1/4" GAZ	MA0901V14G				
		1/8" NPT	MA0901V18B				
	Rear	1/4" SAE	MA0901A14S				
		1/4" GAZ	MA0901A14G				
		1/8" NPT	MA0901A18B				
				1052			
				1056		-1+30	R507+R404A+R407Cvap/liq
				1058	-30+800	-1+30	R22+R417Cvap/liq
				1068			R22+R410A (°F)
				1072		-1+30	R1270
				1074		-1+50	R744
				1086		-1+45	R410A+R22+R134a+R407C
				1088		-1+45	R134a+R404A+R410A+R22
				1100		-1+45	R407Cvap/liq+R410A+R22
				1174		-1+160	R744 (Transcritical)
				1180		-1+45	R410A+R407C+R404A+R134a
				1214		-1+30	R422D+R422A+R417A
				3002		-1+60	R774
				3004		-1+30	R422D
				3006		-1+30	R134a+R404A+R407F
				3010	-30+2300	-1+30	R22+R290+R600A
				3014		-1+160	R744 (Transcritical)
				3024		-1+45	R32
				3026		-1+30	R404A+R407A+R407F
				3028		-1+30	R1234yf+R134a+R1234ze
				3030		-1+45	R134a+R410A+R407C+R407F
				3032		-1+30	R134a+R404A+R407C+R407F
				3034		-1+30	R407A
				3035		-1+30	R404A+R407A+R407F+R449A
				3038		-1+200	R744 (Transcritical)
				3040		-1+30	R449A
				3042		-1+30	R434a
				3044		-1+30	R134a+R404A+R407A+R407F
				3046		-1+45	R32+R410A
				3050		-1+30	R404A+R508B
				3054		-1+30	R1234yf+R1234ze
				3056		-1+30	R290+R134a+R407C+R404A
				3058		-1+30	R448A+R449A
				3060		-1+30	R134a+R404A+R22+R449A
				3062		-1+45	R32+R410A+R134a+R407C
				3064		-1+30	R452a
				3068		-1+30	R134a+R404A+R407F+R449A
				3070		-1+30	R404A+R134a+R449A+R407C
				3072		-1+30	R448A+R449A+R407F
				3074		-1+30	R134a+R404A+R407F+R407C
				3078		-1+30	R452a+R404A+R134a
				3080		-1+45	R32+R410A+R407C+R404A
				3082		-1+45	R32+R410A+R407C
				3084		-1+30	R236fa+R227ea
				3086		-1+30	R744
				3088		-1+50	R744
				3090		-1+45	R1234yf+R1234ze+R410A+R134a
				3092		-1+45	R448A+R449A+R450A+R407F
				3094		-1+45	R134a+R404A+R507A+R407C
				3096		-1+30	R448A+R449A+R450A+R407F
						-1+30	R448A+R449A+R450A+R452A
						-1+30	R448Avap/liq+R448Avap/liq



High Pressure			Reference		Pressure		Refrigerants
Version	Outlet	Fitting	Case	Dial	psi	bar	
Dry	Vertical	1/4" SAE	MA0603V14S				
		1/4" GAZ	MA0603V14G				
		1/8" NPT	MA0603V18B				
	Rear	1/4" SAE	MA0603A14S				
		1/4" GAZ	MA0603A14G				
		1/8" NPT	MA0603A18B				
Oil filled	Vertical	1/4" SAE	MA1003V14S				
		1/4" GAZ	MA1003V14G				
		1/8" NPT	MA1003V18B				
	Rear	1/4" SAE	MA1003A14S				
		1/4" GAZ	MA1003A14G				
		1/8" NPT	MA1003A18B				
Pulse-free	Vertical	1/4" SAE	MA0901V14S				
		1/4" GAZ	MA0901V14G				
		1/8" NPT	MA0901V18B				
	Rear	1/4" SAE	MA0901A14S				
		1/4" GAZ	MA0901A14G				
		1/8" NPT	MA0901A18B				
				3098		-1+30	R404A+R449A+R452A+R134a
				3100		-1+30	R449A+R452+R513+1234yf
				3102		-1+30	R449A+R450A+R452A+R513A
				3104		-1+45	R449Avap/liq+R448Avap/liq
				3106		-1+45	R407A+R449A+R410A
				3108		-1+30	R448A+R449A+R452A+R455A
				3110		-1+45	R410A+R134a+R407C
				3112		-1+45	R32+R410A+R407C
				3114		-1+30	R404A+R448A+R449A+R134a
				3118		-1+30	R1234yf+R134a+R407C+R513A
				3120		-1+45	R404A+R452A+R134a+R410A
				3122	-30+650	-1+45	R32+R290+R600a
				3124		-1+45	R410A+R404A+R448A+R134a
				3126		-1+30	R442A+R134a+R404A
				3130	-30+435	-1+30	R1234yf+R134a+R513A
				3132		-1+30	R134a+R404A+R449A+R448A+R452A
				3134		-1+30	R1234yf+R32+R407C+R134a
				3138	-30+435	-1+30	R22+R290+R600A
				3140		-1+45	R449A+R452A+R32+R134a
				3142		-1+30	R404A+R407F+R448A+R449A
				3144		-1+45	R449A+R410A+R32+R134a
				3146		-1+30	R1234yf+R1234ze+R134a+R513A
				3148		-1+30	R14+R23
				3150		-1+30	R134a+R448A+R452A+R455A
				3152		-1+30	R134a+R404A+R448A+R452A
				3154	-30+435	-1+30	R1234yf+R1234ze+R134a
				3156		-1+30	R290+R22+R134a
				3158		-1+30	R134a+R404A+R452A+R453A
				3160		-1+30	R134a+R450A+R452A+R513A
				3162		-1+30	R448A+R449A+R450A+R513A
				3164		-1+45	R134a
				3166		-1+30	R245fa
				3168		-1+45	R410A+R454B
				3170		-1+45	R410A+R404A+R449A+R134a
				3174		-1+45	R449A+R455A+R32+R410A
				3176		-1+30	R449A+R452A+R513A+R404A
				3178		-1+45	R32+R134a+R407C+R404A
				3180		-1+30	R513A
				3182		-1+30	R454C
				3184		-1+30	R290+R454C+R455A+R1234yf
				3186		-1+30	R404A+R455Avap/liq+R454Cvap/liq
				3188		-1+30	R1234yf+R134a+R450A+R513A
				3190		-1+30	R1233zd(E)
				3192		-1+30	R134a+R407C+R513A
				3194		-1+30	R134a+R448A+R513A+R407C
				3198		-1+30	R454A+R454B+R454C+R404A
				3200		-1+30	R1234yf+R1234ze+R454C+R455A
				3202		-1+30	R32+R404A+R410A+R134a
				3204		-1+30	R452B
				3206		-1+30	R404A+R449A+R513A+R134a
				3208		-1+30	R404A+R448A+R449A+R455A
				3210		-1+30	R422Dvap/liq+R22

How to read the tables? The complete designation of a pressure gauge comprises the reference of the casing, followed by the reference of the dial. E.g.: Pressure gauge diameter 80mm composite, oil-filled, vertical outlet, 1/8"NPT, -1+45bar / R407C+R410A+R22: Case: MA1003V18B; Dial: 1088; Reference: MA1003V18B-1088



# Blondelle Pressure Gauge, Ø 80, Composite, HP p.2/2



- Class 1
- 'A Lame Acier' unique bellow mechanism, the highest durability and accuracy
- All combinations of refrigerants possible
- Each gauge calibrated individually, Possibility to adjust the needle
  
- High quality composite casing
- Admissible overload: 200%
- Dry , oil filled or pulse-free
- Outlet: vertical or rear, fitting: 1/4" SAE or 1/8" NPT

High Pressure Version	Outlet	Fitting	Reference Case	Dial	Pressure		Refrigerants
					psi	bar	
Dry	Vertical	1/4" SAE	MA0603V14S				
		1/4" GAZ	MA0603V14G				
		1/8" NPT	MA0603V18B				
	Rear	1/4" SAE	MA0603A14S				
		1/4" GAZ	MA0603A14G				
		1/8" NPT	MA0603A18B				
Oil filled	Vertical	1/4" SAE	MA1003V14S				
		1/4" GAZ	MA1003V14G				
		1/8" NPT	MA1003V18B				
	Rear	1/4" SAE	MA1003A14S				
		1/4" GAZ	MA1003A14G				
		1/8" NPT	MA1003A18B				
Pulse-free	Vertical	1/4" SAE	MA0901V14S				
		1/4" GAZ	MA0901V14G				
		1/8" NPT	MA0901V18B				
	Rear	1/4" SAE	MA0901A14S				
		1/4" GAZ	MA0901A14G				
		1/8" NPT	MA0901A18B				
				4091		-1+30	R409Avap/liq
				4093		-1+30	R134a+R22+R409Avap/liq
				5942	-30+435	-1+30	R12+R22+R502
				6073		-1+30	R12+R22+R502
				6128	-30+435	-1+30	R22+R134a
				6176		-1+30	R134a
				6189		-1+30	R22+R134a
				6608	-30+435	-1+30	R134a
				6631		-1+30	R134a+R404A
				6705	-30+435	-1+30	R134a+R404A
				7131	-30+435	-1+30	R290+R600A
				7280		-1+30	R23
				7310		-1+30	R134a+R404A+R507+R407C
				7313		-1+30	R134a+R22+R404A
				7315	-30+435	-1+30	R134a+R22+R404A
				7342		-1+30	R134a+R404A+R22+R407C
				7527		-1+30	R134a+R404A+R407Cvap/liq
				7529		-1+16	R600A+Care30vap/liq
				7531		-1+30	R290+Care50vap/liq
				7543		-1+30	R134a+R22+R407Cvap/liq
				7555		-1+30	R134a+R22+R404A+R507
				7735		-1+30	R22+R407Cvap/liq
				7806	-30+435		R22+R13a+R404A (°F)
				7808		-1+45	R410A
				8102	-30+435		R12+R22+R502 (°F)
				8138	-30+800		R410A (°F)
				8265		-1+30	R134a+R407Cvap/liq





Version	Outlet	Fitting	Reference		Pressure		Refrigerants
			Case	Dial	psi	bar	
Oil filled	Vertical	1/4" SAE	MA0503V14S				
		1/8" NPT	MA0503V18B				
	Rear	1/4" SAE	MA0503A14S				
		1/8" NPT	MA0503A18B				
				6364			0+16
				8010			0+10
				3171	-30+290		-1+20
		8030			0+30		
		3136	-30+650		-1+45		
		3135			-1+50		
			3163			-1+60	

How to read the tables? The complete designation of a pressure gauge comprises the reference of the casing, followed by the reference of the dial. E.g.: Pressure gauge diameter 80mm composite, oil-filled, vertical outlet, 1/8"NPT, -1+45bar / R407C+R410A+R22: Case: MA1003V18B; Dial: 1088; Reference: MA1003V18B-1088

# Blondelle Pressure Gauge, Ø 100, Aluminium, LP

Exceptional measurement and reading accuracy; up to 6 refrigerants on 1 dial.



- All combinations of refrigerants possible, up to 6 refrigerants on 1 dial.
- Class 1
- 'A Lame Acier' unique bellow mechanism, the highest durability and accuracy.
- Each gauge calibrated individually
- Aluminium case
  
- Admissible overload: 200%
- Possibility to adjust the needle
- Dry, oil filled or pulse-free
- Outlet: vertical or rear
- Fitting: 1/4" SAE or 1/8" NPT

Low Pressure			Reference		Pressure		Refrigerants
Version	Outlet	Fitting	Case	Dial	psi	bar	
Dry	Vertical	1/4" SAE	MA0605V14S				
		1/8" NPT	MA0605V18B				
Oil filled	Rear	1/4" SAE	MA0605A14S				
		1/8" NPT	MA0605A18B				
	Vertical	1/4" SAE	MA1005V14S				
		1/8" NPT	MA1005V18B				
Pulse-free	Rear	1/4" SAE	MA1005A14S				
		1/8" NPT	MA1005A18B				
	Vertical	1/4" SAE	MA0701V14S				
		1/8" NPT	MA0701V18B				
	Rear	1/4" SAE	MA0701A14S				
		1/8" NPT	MA0701A18B				
					1077	-1+20	R22+R134a+R404A+R407Cvap/liq+R410A
					1083	-1+10	R134a+R404A+R22+R407Cvap/liq
					1095	-1+10	R22+R404A
					1097	-1+6	R170
					1151	-1+30	R744 (Subcritical)
					1153	-1+20	R410A
					1177	-1+80	R744 (Transcritical)
					1184	-1+100	R744 (Transcritical)
					1185	-1+10	R134a+R507
					1189	-1+20	R410A+R407Cvap/liq+R404A+R134a+R507
					1191	-1+10	R227ea
					2622	-1+10	R12 + R22 + R502
					4001	-1+80	R744 (Transcritical)
					4003	-1+10	R134a+R22+R404A+R507
					4007	-1+10	R404A+R134a+R407C+R407F
					4011	-1+10	R134a+R404A+R407CvapR407Fvap
					4013	-1+10	R422Dvap/liq
					4017	-1+10	R407Avap/liq
					4019	-1+140	R744 (Transcritical)
					4021	-1+20	R434a
					4025	-1+10	R449Avap/liq
					4027	-1+10	R507
					4029	-1+10	R448Avap/liq+R449Avap/liq
					4033	-1+20	R407A+R449A+R410A
					4035	-1+10	R407C+R407A+R407F
					4037	-1+20	R407A+R407F+R448A+R449A+R410A+R32
					4041	-1+20	R410A+R407Cvap/liq+R404A+R134a+R507
					4043	-1+10	R452a
					4045	-1+20	R32+R134a+R404A+R407Cvap/liq+R410A
					4047	-1+20	R134a+R404A+R449A+R452A
					4049	-1+20	R449Avap/liq
					4055	-1+10	R1234yf
					4061	-1+10	R513A



Low Pressure			Reference		Pressure		Refrigerants
Version	Outlet	Fitting	Case	Dial	psi	bar	
Dry	Vertical	1/4" SAE	MA0605V14S				
		1/8" NPT	MA0605V18B				
	Rear	1/4" SAE	MA0605A14S				
		1/8" NPT	MA0605A18B				
Oil filled	Vertical	1/4" SAE	MA1005V14S				
		1/8" NPT	MA1005V18B				
	Rear	1/4" SAE	MA1005A14S				
		1/8" NPT	MA1005A18B				
Pulse-free	Vertical	1/4" SAE	MA0701V14S				
		1/8" NPT	MA0701V18B				
	Rear	1/4" SAE	MA0701A14S				
		1/8" NPT	MA0701A18B				
				5785	-30+140	-1+10	R134a
				6592		-1+10	R22+R134a
				6688		-1+10	R134a
				6696		-1+10	R134a+R404A
				7098	-30+140	-1+10	R290+R600A
				7218		-1+10	R134a+R404A+R507+R407Cvap/liq
				7360		-1+10	R407Cvap/liq
				7474		-1+10	R23
				7533		-1+10	R407Cvap/liq+R507

Version	Outlet	Fitting	Reference Case	Dial	Pressure psi	bar	Refrigerants	
Oil filled	Vertical	1/4" SAE	MA0505V14S					
		1/8" NPT	MA0505V18B					
		Rear	1/4" SAE	MA0505A14S				
			1/8" NPT	MA0505A18B				
					1098	0+50		
					1195	-1+30		
					1229	0+15		
					4005	0+80		
					4006	0+160		
					4009	0+30		
					4013	-1+10		
					4015	-1+200		
					4016	0+180		
					4023	0+2,5		
					4050	-1+45		
					4053	0+40		
				7371	0+580	-1+20		

How to read the tables? The complete designation of a pressure gauge comprises the reference of the casing, followed by the reference of the dial. E.g.: Pressure gauge diameter 100mm aluminium, pulse-free, rear outlet, 1/8"NPT, -1+45bar / R410A Case: MA0701A18B; Dial: 1154; Reference: MA0701A18B-1154

# Blondelle Pressure Gauge, Ø 100, Aluminium, HP



Exceptional measurement and reading accuracy; up to 6 refrigerants on 1 dial.



- All combinations of refrigerants possible, up to 6 refrigerants on 1 dial.
- Class 1
- 'A Lame Acier' unique bellow mechanism, the highest durability and accuracy.
- Each gauge calibrated individually
- Aluminium case
  
- Admissible overload: 200%
- Possibility to adjust the needle
- Dry, oil filled or pulse-free
- Outlet: vertical or rear
- Fitting: 1/4" SAE or 1/8" NPT

High Pressure			Reference		Pressure		Refrigerants
Version	Outlet	Fitting	Case	Dial	psi	bar	
Dry	Vertical	1/4" SAE	MA0605V14S				
		1/8" NPT	MA0605V18B				
Oil filled	Rear	1/4" SAE	MA0605A14S				
		1/8" NPT	MA0605A18B				
	Vertical	1/4" SAE	MA1005V14S				
		1/8" NPT	MA1005V18B				
Pulse-free	Rear	1/4" SAE	MA1005A14S				
		1/8" NPT	MA1005A18B				
	Vertical	1/4" SAE	MA0701V14S				
		1/8" NPT	MA0701V18B				
	Rear	1/4" SAE	MA0701A14S				
		1/8" NPT	MA0701A18B				
					1078	-1+45	R22+R134a+R404A+R407Cvap/liq+R410A
					1084	-1+30	R134a+R404A+R22+R407Cvap/liq
					1096	-1+30	R22+R404A
					1154	-1+45	R410A
					1178	-1+160	R744 (Transcritical)
					1183	-1+50	R744 (Subcritical)
					1186	-1+30	R134a+R507
					1190	-1+45	R410A+R407Cvap/liq+R404A+R134a+R507
					1192	-1+30	R227ea
					2623	-1+30	R12 + R22 + R502
					4002	-30+2300	R744 (Transcritical)
					4004	-1+30	R134a+R22+R404A+R507
					4008	-1+30	R404A+R134a+R407C+R407F
					4012	-1+30	R134a+R404A+R407CvapR407Fvap
					4014	-1+30	R422Dvap/liq
					4015	-1+200	R744 (Transcritical)
					4018	-1+30	R407A
					4020	-1+170	R744 (Transcritical)
					4022	-1+30	R434a
					4026	-1+30	R449Avap/liq
					4028	-1+30	R507
					4030	-1+30	R448Avap/liq+R449Avap/liq
					4034	-1+45	R407A+R449A+R410A
					4036	-1+30	R407C+R407A+R407F
					4038	-1+45	R407A+R407F+R448A+R449A+R410A+R32
					4042	-1+45	R410A+R407Cvap/liq+R404A+R134a+R507
					4044	-1+30	R452a
					4046	-1+45	R32+R134a+R404A+R407Cvap/liq+R410A
					4048	-1+30	R134a+R404A+R449A+R452A
					4056	-1+30	R1234yf
					4062	-1+30	R513A



High Pressure			Reference		Pressure		Refrigerants
Version	Outlet	Fitting	Case	Dial	psi	bar	
Dry	Vertical	1/4" SAE	MA0605V14S				
		1/8" NPT	MA0605V18B				
	Rear	1/4" SAE	MA0605A14S				
		1/8" NPT	MA0605A18B				
Oil filled	Vertical	1/4" SAE	MA1005V14S				
		1/8" NPT	MA1005V18B				
	Rear	1/4" SAE	MA1005A14S				
		1/8" NPT	MA1005A18B				
Pulse-free	Vertical	1/4" SAE	MA0701V14S				
		1/8" NPT	MA0701V18B				
	Rear	1/4" SAE	MA0701A14S				
		1/8" NPT	MA0701A18B				
				5786	-30+400	-1+30	R134a
				6593		-1+30	R22+R134a
				6689		-1+30	R134a
				6697		-1+30	R134a+R404A
				7099	-30+400	-1+30	R290+R600A
				7219		-1+30	R134a+R404A+R507+R407Cvap/liq
				7361		-1+30	R407Cvap/liq
				7475		-1+30	R23
				7534		-1+30	R407Cvap/liq+R507

Version	Outlet	Fitting	Reference Case	Dial	Pressure psi	bar	Refrigerants
Oil filled	Vertical	1/4" SAE	MA0505V14S				
		1/8" NPT	MA0505V18B				
	Rear	1/4" SAE	MA0505A14S				
		1/8" NPT	MA0505A18B				
					1098	0+50	
					1195	-1+30	
					1229	0+15	
					4005	0+80	
					4006	0+160	
					4009	0+30	
					4013	-1+10	
					4015	-1+200	
					4016	0+180	
					4023	0+2,5	
					4050	-1+45	
					4053	0+40	
				7371	0+580	-1+20	

How to read the tables? The complete designation of a pressure gauge comprises the reference of the casing, followed by the reference of the dial. E.g.: Pressure gauge diameter 100mm aluminium, pulse-free, rear outlet, 1/8"NPT, -1+45bar / R410A Case: MA0701A18B; Dial: 1154; Reference: MA0701A18B-1154

# Blondelle Pressure Gauge, Ø 100, Composite, LP



Exceptional measurement and reading accuracy; up to 6 refrigerants on 1 dial.



- All combinations of refrigerants possible, up to 6 refrigerants on 1 dial.
- Class 1
- 'A Lame Acier' unique bellow mechanism, the highest durability and accuracy.
- Each gauge calibrated individually
- Composite case
  
- Admissible overload: 200%
- Possibility to adjust the needle
- Dry, oil filled or pulse-free
- Outlet: vertical or rear
- Fitting: 1/4" SAE or 1/8" NPT

Low Pressure			Reference		Pressure		Refrigerants			
Version	Outlet	Fitting	Case	Dial	psi	bar				
Dry	Vertical	1/4" SAE	MA0607V14S							
		1/8" NPT	MA0607V18B							
	Rear	1/4" SAE	MA0607A14S							
		1/8" NPT	MA0607A18B							
Oil filled	Vertical	1/4" SAE	MA1007V14S							
		1/8" NPT	MA1007V18B							
	Rear	1/4" SAE	MA1007A14S							
		1/8" NPT	MA1007A18B							
Pulse-free	Vertical	1/4" SAE	MA0703V14S							
		1/8" NPT	MA0703V18B							
	Rear	1/4" SAE	MA0703A14S							
		1/8" NPT	MA0703A18B							
								1077	-1+20	R22+R134a+R404A+R407Cvap/liq+R410A
								1083	-1+10	R134a+R404A+R22+R407Cvap/liq
								1095	-1+10	R22+R404A
								1097	-1+6	R170
								1151	-1+30	R744 (Subcritical)
								1153	-1+20	R410A
								1177	-1+80	R744 (Transcritical)
								1184	-1+100	R744 (Transcritical)
				1185	-1+10	R134a+R507				
				1189	-1+20	R410A+R407Cvap/liq+R404A+R134a+R507				
				1191	-1+10	R227ea				
				2622	-1+10	R12 + R22 + R502				
				4001	-1+80	R744 (Transcritical)				
				4003	-1+10	R134a+R22+R404A+R507				
				4007	-1+10	R404A+R134a+R407C+R407F				
				4011	-1+10	R134a+R404A+R407CvapR407Fvap				
				4013	-1+10	R422Dvap/liq				
				4017	-1+10	R407Avap/liq				
				4019	-1+140	R744 (Transcritical)				
				4021	-1+20	R434a				
				4025	-1+10	R449Avap/liq				
				4027	-1+10	R507				
				4029	-1+10	R448Avap/liq+R449Avap/liq				
				4033	-1+20	R407A+R449A+R410A				
				4035	-1+10	R407C+R407A+R407F				
				4037	-1+20	R407A+R407F+R448A+R449A+R410A+R32				
				4041	-1+20	R410A+R407Cvap/liq+R404A+R134a+R507				
				4043	-1+10	R452a				
				4045	-1+20	R32+R134a+R404A+R407Cvap/liq+R410A				
				4047	-1+20	R134a+R404A+R449A+R452A				
				4049	-1+20	R449Avap/liq				
				4055	-1+10	R1234yf				
				4061	-1+10	R513A				



Low Pressure			Reference		Pressure		Refrigerants
Version	Outlet	Fitting	Case	Dial	psi	bar	
Dry	Vertical	1/4" SAE	MA0607V14S				
		1/8" NPT	MA0607V18B				
	Rear	1/4" SAE	MA0607A14S				
		1/8" NPT	MA0607A18B				
Oil filled	Vertical	1/4" SAE	MA1007V14S				
		1/8" NPT	MA1007V18B				
	Rear	1/4" SAE	MA1007A14S				
		1/8" NPT	MA1007A18B				
Pulse-free	Vertical	1/4" SAE	MA0703V14S				
		1/8" NPT	MA0703V18B				
	Rear	1/4" SAE	MA0703A14S				
		1/8" NPT	MA0703A18B				
				5785	-30+140	-1+10	R134a
				6592		-1+10	R22+R134a
				6688		-1+10	R134a
				6696		-1+10	R134a+R404A
				7098	-30+140	-1+10	R290+R600A
				7218		-1+10	R134a+R404A+R507+R407Cvap/liq
				7360		-1+10	R407Cvap/liq
				7474		-1+10	R23
				7533		-1+10	R407Cvap/liq+R507

Version	Outlet	Fitting	Reference		Pressure		Refrigerants
			Case	Dial	psi	bar	
Oil filled	Vertical	1/4" SAE	MA0507V14S				
		1/8" NPT	MA0507V18B				
	Rear	1/4" SAE	MA0507A14S				
		1/8" NPT	MA0507A18B				
				1098		0+50	
				1195		-1+30	
				1229		0+15	
				4005		0+80	
				4006		0+160	
				4009		0+30	
				4013		-1+10	
				4015		-1+200	
				4016		0+180	
				4023		0+2,5	
				4050		-1+45	
				4053	0+580	0+40	
				7371		-1+20	

How to read the tables? The complete designation of a pressure gauge comprises the reference of the casing, followed by the reference of the dial. E.g.: Pressure gauge diameter 100mm composite, pulse-free, rear outlet, 1/8"NPT, -1+45bar / R410A. Case: MA0703A18B; Dial: 1154; Reference: MA0703A18B-1154

# Blondelle Pressure Gauge, Ø 100, Composite, HP

Exceptional measurement and reading accuracy; up to 6 refrigerants on 1 dial.



- All combinations of refrigerants possible, up to 6 refrigerants on 1 dial.
- Class 1
- 'A Lame Acier' unique bellow mechanism, the highest durability and accuracy.
- Each gauge calibrated individually
- Composite case
  
- Admissible overload: 200%
- Possibility to adjust the needle
- Dry, oil filled or pulse-free
- Outlet: vertical or rear
- Fitting: 1/4" SAE or 1/8" NPT

High Pressure		Reference		Pressure		Refrigerants			
Version	Outlet	Fitting	Case	Dial	psi		bar		
Dry	Vertical	1/4" SAE	MA0607V14S						
		1/8" NPT	MA0607V18B						
	Rear	1/4" SAE	MA0607A14S						
		1/8" NPT	MA0607A18B						
Oil filled	Vertical	1/4" SAE	MA1007V14S						
		1/8" NPT	MA1007V18B						
	Rear	1/4" SAE	MA1007A14S						
		1/8" NPT	MA1007A18B						
Pulse-free	Vertical	1/4" SAE	MA0703V14S						
		1/8" NPT	MA0703V18B						
	Rear	1/4" SAE	MA0703A14S						
		1/8" NPT	MA0703A18B						
							1078	-1+45	R22+R134a+R404A+R407Cvap/liq+R410A
							1084	-1+30	R134a+R404A+R22+R407Cvap/liq
							1096	-1+30	R22+R404A
							1154	-1+45	R410A
							1178	-1+160	R744 (Transcritical)
							1183	-1+50	R744 (Subcritical)
							1186	-1+30	R134a+R507
							1190	-1+45	R410A+R407Cvap/liq+R404A+R134a+R507
							1192	-1+30	R227ea
							2623	-1+30	R12 + R22 + R502
							4002	-30+2300	R744 (Transcritical)
							4004	-1+30	R134a+R22+R404A+R507
							4008	-1+30	R404A+R134a+R407C+R407F
							4012	-1+30	R134a+R404A+R407CvapR407Fvap
							4014	-1+30	R422Dvap/liq
							4015	-1+200	R744 (Transcritical)
							4018	-1+30	R407A
							4020	-1+170	R744 (Transcritical)
							4022	-1+30	R434a
							4026	-1+30	R449Avap/liq
							4028	-1+30	R507
							4030	-1+30	R448Avap/liq+R449Avap/liq
							4034	-1+45	R407A+R449A+R410A
							4036	-1+30	R407C+R407A+R407F
							4038	-1+45	R407A+R407F+R448A+R449A+R410A+R32
							4042	-1+45	R410A+R407Cvap/liq+R404A+R134a+R507
							4044	-1+30	R452a
							4046	-1+45	R32+R134a+R404A+R407Cvap/liq+R410A
							4048	-1+30	R134a+R404A+R449A+R452A
							4056	-1+30	R1234yf
							4062	-1+30	R513A





High Pressure			Reference		Pressure		Refrigerants
Version	Outlet	Fitting	Case	Dial	psi	bar	
Dry	Vertical	1/4" SAE	MA0607V14S				
		1/8" NPT	MA0607V18B				
	Rear	1/4" SAE	MA0607A14S				
		1/8" NPT	MA0607A18B				
Oil filled	Vertical	1/4" SAE	MA1007V14S				
		1/8" NPT	MA1007V18B				
	Rear	1/4" SAE	MA1007A14S				
		1/8" NPT	MA1007A18B				
Pulse-free	Vertical	1/4" SAE	MA0703V14S				
		1/8" NPT	MA0703V18B				
	Rear	1/4" SAE	MA0703A14S				
		1/8" NPT	MA0703A18B				
				5786	-30+400	-1+30	R134a
				6593		-1+30	R22+R134a
				6689		-1+30	R134a
				6697		-1+30	R134a+R404A
				7099	-30+400	-1+30	R290+R600A
				7219		-1+30	R134a+R404A+R507+R407Cvap/liq
				7361		-1+30	R407Cvap/liq
				7475		-1+30	R23
				7534		-1+30	R407Cvap/liq+R507

Version	Outlet	Fitting	Reference		Pressure		Refrigerants	
			Case	Dial	psi	bar		
Oil filled	Vertical	1/4" SAE	MA0507V14S					
		1/8" NPT	MA0507V18B					
		Rear	1/4" SAE	MA0507A14S				
			1/8" NPT	MA0507A18B				
					1098		0+50	
					1195		-1+30	
					1229		0+15	
					4005		0+80	
					4006		0+160	
					4009		0+30	
					4013		-1+10	
					4015		-1+200	
					4016		0+180	
					4023		0+2,5	
					4050		-1+45	
					4053	0+580	0+40	
				7371		-1+20		

How to read the tables? The complete designation of a pressure gauge comprises the reference of the casing, followed by the reference of the dial. E.g.: Pressure gauge diameter 100mm composite, pulse-free, rear outlet, 1/8"NPT, -1+45bar / R410A. Case: MA0703A18B; Dial: 1154; Reference: MA0703A18B-1154

# Blondelle NH3 Pressure Gauge

Gauge developed for use on ammonia systems



- Class 1 'A Lame Acier' unique bellow mechanism, the highest durability and accuracy
- Ammonia resistant design
- All parts in contact with ammonia made of stainless steel 316L
- Ø 80 high quality composite casing or Ø 100 aluminium case
- Dry, oil filled or pulse-free
  
- Outlet: vertical or rear
- Fitting: 1/4" GAZ or 1/2" GAZ
- Each gauge calibrated individually
- Admissible overload: 200%
- Possibility to adjust the needle

D80 Composite case			Reference		Pressure		Refrigerants
Version	Outlet	Fitting	Case	Dial	psi	bar	
Dry	Vertical	1/4" GAZ	MA0604V14G				
		1/2" GAZ	MA0604V12G				
	Rear	1/4" GAZ	MA0604A14G				
		1/2" GAZ	MA0604A12G				
Oil filled	Vertical	1/4" GAZ	MA1004V14G				
		1/2" GAZ	MA1004V12G				
	Rear	1/4" GAZ	MA1004A14G				
		1/2" GAZ	MA1004A12G				
Pulse-free	Vertical	1/4" GAZ	MA0902V14G				
		1/2" GAZ	MA0902V12G				
	Rear	1/4" GAZ	MA0902A14G				
		1/2" GAZ	MA0902A12G				
				1161		-1+10	R717
				1162		-1+30	R717
				6078	-30+140	-1+10	R717
				6079	-30+400	-1+30	R717
				3017		-1+10	R717+R723
				3018		-1+30	R717+R723

D100 Aluminium case			Reference		Pressure		Refrigerants
Version	Outlet	Fitting	Case	Dial	psi	bar	
Dry	Vertical	1/4" GAZ	MA0606V14G				
		1/2" GAZ	MA0606V12G				
	Rear	1/4" GAZ	MA0606A14G				
		1/2" GAZ	MA0606A12G				
Oil filled	Vertical	1/4" GAZ	MA1006V14G				
		1/2" GAZ	MA1006V12G				
	Rear	1/4" GAZ	MA1006A14G				
		1/2" GAZ	MA1006A12G				
Pulse-free	Vertical	1/4" GAZ	MA0704V14G				
		1/2" GAZ	MA0704V12G				
	Rear	1/4" GAZ	MA0704A14G				
		1/2" GAZ	MA0704A12G				
				1261	-30+140	-1+10	R717
				1262	-30+400	-1+30	R717

How to read the tables? The complete designation of a pressure gauge comprises the reference of the casing, followed by the reference of the dial. E.g.: Pressure gauge diameter 80mm composite, oil filled, rear outlet, 1/4"GAZ, -1+10bar / NH3. Case: MA1004A14G; Dial: 1161; Reference MA1004A14G-1161



# Blondelle Accessories for Aluminium Gauges

## Gauge fixations



Fastening mount	
Ø	Reference
60 mm	AC0306-5269
100 mm	AC0306-192

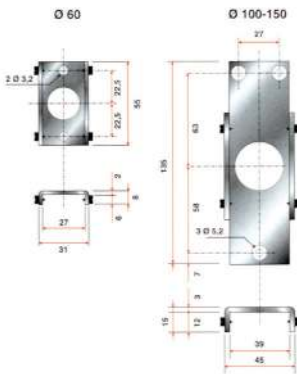
Fastening clamp	
Ø	Reference
60 mm	AC0305-5400
100 mm	AC0305-2112

Collar*	
Ø	Reference
60 mm	AC0302-185.30
100 mm	AC0302-190.30

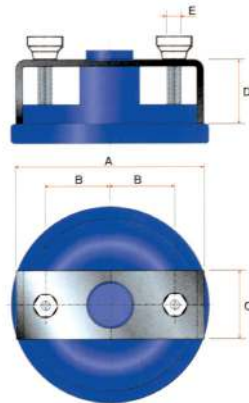
\* only for dry versions

## Dimensions

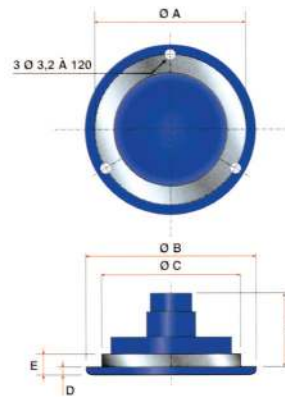
### Fastening mount



### Fastening clamp



### Collar



Dimensions in mm				
Ø	60	100	150	
A	72	114	178	
B	24	40	60	
C	33	40	40	
D	28,5	37	48	
E	M4	M6	M6	

Dimensions in mm				
Ø	60	100	150	
A	80	122	180	
B	88	130	189	
C	72	114	171	
D	4	4,5	4,5	
E	10	10,5	10,5	
F	42,5	54	52	

## Gauge protections



Anti-impact protection		
Ø	Color	Reference
60 mm	Red	AC0308-1259.02
	Blue	AC0308-1259.03
100 mm	Red	AC0308-1260.02
	Blue	AC0308-1260.03

# Blondelle Accessories for Composite Gauges

## Gauge fixations

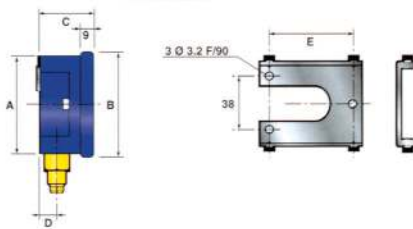


Fastening mount	
Ø	Reference
60 mm	AC0306-6369
80 mm	AC0306-6370
100 mm	AC0306-6371

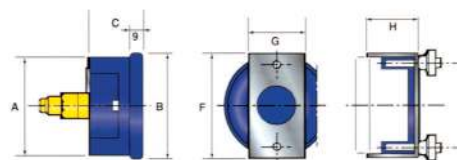
Fastening clamp	
Ø	Reference
60 mm	AC0305-5400
80 mm	AC0305-6134
100 mm	AC0305-2112

## Dimensions

### Fastening mount



### Fastening clamp



Dimensions in mm			
Ø	60	80	100
A	66	79	108
B	71	88	119
C	35	35	39
D	9	11	11
E	36	56	55
F	70	88	114
G	35	40	40
H	34	33	37
I	57	70	40

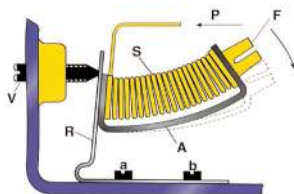
## Gauge protections



Anti-impact protection		
Ø	Color	Reference
60 mm	Red	AC0308-6123.02
	Yellow	AC0308-6123.04
	Blue	AC0308-6123.03
80 mm	Red	AC0308-6124.02
	Yellow	AC0308-6124.04
	Blue	AC0308-6124.03

# Blondelle 'A LAME ACIER' Principle

Pressure-sensitive element formed of a bellow and a hardened stabilised blade.



- Class 1 accuracy: 1% of the end of the scale.
- Admissible overload: 200% for pressure gauge
- Accidental pressure: 50% for vacuum gauge
- Each instrument is calibrated individually.
- Perfect impression of dials through tampography provides you with high reading sensitivity.
- Light alloy casing or very high resistance injection moulded composite
- Operation temperature: -40°C +70°C
- Your logo can appear on the dials
- Endless combinations of refrigerants

- A = Steel plate (Lame Acier)
- S = Metal bellow
- R = Fixing square of motor element
- F = Kinematics articulation fork
- V= 0-screw
- P = Fluid inlet

- The " A Lame Acier®" pressure gauge comprises a pressure-sensitive element formed of a metal bellow and a steel plate.
- The steel plate A describes a generating line proportional to the pressure existing inside the bellow S (bellow situated between the two arched ends of the steel plate).
- One of the ends of the steel plate is fixed to bracket R which itself is fixed to the housing at a-b.
- A fork F fixed to the other end drives the kinematics, thus rotating the needle.
- The adjusting screw V - accessible from the outside - enables adjusting the position of the needle.



# BLONDELLE MANIFOLDS



Blondelle



# Blondelle 1 Lane Manifold



- Unique spindle valve, always tight without effort
- Class 1, 'A Lame Acier' gauge
- Ø 60 or Ø 80
- Dry, oil filled or pulse-free (only Ø 80)
- All combinations of refrigerants possible
- Low Pressure or High Pressure gauge fitted
- Available with or without appropriate charging hoses

Supplied with: 2 red/blue charging hoses, length 1 m; option ball valve. R410A: High Resistance hoses : one hose with two 1/4" SAE fittings +1 charging line with one 5/16" and one 1/4" SAE fitting.

Pressure	Gauges		Manifold	Reference		bar	psi	Scales	
	Diameter	Type		Dial	Option			Refrigerants	
Low pressure	60 mm	Dry	FR0801BP						
	80 mm	Oil filled	FR1001BP						
High pressure	60 mm	Dry	FR0802BP						
		Oil filled	FR1002BP						
	80 mm	Pulse-free	FR0901BP						
		Dry	FR0801HP						
	80 mm	Oil filled	FR1001HP						
		Dry	FR0802HP						
	80 mm	Oil filled	FR1002HP						
		Pulse-free	FR0901HP						
					E01	x	x	R12+R22+R502	
					E02	x	x	R134a+R404A	
				E03	x		R22+R134a+R404A		
				E04	x		R134a+R404A+R507+R407C		
				E05	x	x	R290+R600		
				E06	x		R22+R134a+R404A+R507		
				E07	x		R134a+R407Cvap/liq		
				E08	x		R22+R134a+R404A+R407C		
				E09	x		R134a+R22+R409Avap/liq		
				E10	x		R22+R417Avap/liq		
				E11	x		R134a+R404A+R407Cvap/liq		
				E12	x		R134a+R22+R407Cvap/liq		
				E13	x		R507+R407Cvap/liq		
				E15	x		R410A		
				E16	x		R1270		
				E17	x		R410A+R22+R134a+R407C		
				E20	x		R744 (-1+30 Bar, -1+50 Bar)*		
				E21	x		R410A+R22+R404A+R134a		
				E23	x		R23		
				E24	x		R22+R410A+R407Cvap/liq		
				E27	x		R410A+R407C+R404A+R134a		
				E28	x		R422Dvap/liq+R422Avap/liq+R417Avap/liq		
				E33	x		R744 (-1+30 Bar, -1+60 Bar)*		
				E34	x	x	R744 (-1+30 Bar/435psi, -1+50 Bar/725psi )*		
				E38	x		R134a+R1234yf+R1234ze		
				E40	x		R227ea		
				E42	x	x	R22+R290+R600A		
				E43	x		R134a+R404A+R407F		
				E44	x		R32		
				E46	x		R407A+R407F+R404A		
				E47	x		R404A+R407A+R407F+R449A		
				E48	x		R134a+R404A+R407A+R407F		
				E49	x		R32+R410A		
				E50	x		R290+R134a+R407C+R404A		
				E51	x		R404A+R508		
				E52	x		R32+R410A+R134a+R407C		
				E53	x		R134a+R404A+R22+R449A		
				E54	x		R452a		
				E55	x		R134a+R404A+R407F+R449A		
				E56	x		R134a+R404A+R449A+R407C		
				E57	x		R134a+R404A+R407F+R407C		
				E58	x		R452a+R404A+R134a		
				E60	x		R32+R410A+R407C		
				E61	x		R448A+R449A+R407F		
				E62	x		R23+R507		
				E63	x		R448A+R449A+R450A+R452A		
				E64	x		R449Avap/liq+R448Avap/liq		
				E65	x		R449A+R452+R513+1234yf		
				E66	x		R404A+R449A+R452A+R134a		
				E67	x		R407A+R449A+R410A		
				E68	x		R448A+R449A+R452A+R455A		
				E69	x		R410A+R134a+R407Cvap/liq		
				E70	x		R404A+R448A+R449A+R134a		
				E71	x		R404A+R452A+R134a+R410A		
				E72	x		R410A+R404A+R448A+R134a		
				E73	x		R442A+R134a+R404A		
				E74	x		R32+R134a+R407C+R404A		
					V		Option: Charging hoses length 1m with ball valve		



Pressure	Gauges		Reference			Scales		
	Diameter	Type	Manifold	Dial	Option	bar	psi	Refrigerants
Low pressure	60 mm	Dry	FR0801BP					
		Oil filled	FR1001BP					
	80 mm	Dry	FR0802BP					
		Oil filled	FR1002BP					
High pressure	60 mm	Pulse-free	FR0901BP					
		Dry	FR0801HP					
	80 mm	Oil filled	FR1001HP					
		Dry	FR0802HP					
		Oil filled	FR1002HP					
		Pulse-free	FR0901HP					
				E77		x		-1+20Bar
				E78		x		R134a+R404A+R449A+R448A+R452A
				E79		x		R134a
				E80		x		R1234yf+R32+R407C+R134a
				E81		x		R449+R452+R32+R134a
				E82		x		R404A+R407F+R448A+R449A
				E83		x		R449+R410A+R32+R134a
				E84		x		R134a+R448A+R452A+R455A
				E85		x		R1234yf+R1234ze+R454C+R455A
				E86		x		-1+50Bar
				E87		x		R32+R404A+R410A+R134a
				E88		x		R134a+R404A+R449A+R452A
				E89		x		-1+60Bar
				E90		x		R410A+R454B
				E91		x		R410A+R404A+R449A+R134a
				E92		x		R449A+R455A+R32+R410A
				E93		x		R134a+R513A+1234yf+R1234ze
				E94		x		R449A+R452A+R513A+R404A
				E95		x		R513A
				E96		x		R290+R454C+R455A+R1234yf
				E97		x		R134a+R407C+R513A
				E98		x		R404A+R455Avap/liq+R454Cvap/liq
				E99		x	x	R410A
				E101		x		R454A+R454B+R454C+R404A
				E102		x		R404A+R449A+R513A+R134a
				E104		x		R404A+R448A+R449A+R455A
				E105		x		R422Dvap/liq+R22
					V			Option: Charging hoses length 1m with ball valve

Bare body	Reference
Low Pressure	FR0101BP
High Pressure	FR0101HP

\* For transcritical references look at page 54

E.g.: 1 lane aluminium manifold LP, charging hoses, 80mm gauge, oil filled, refrigerants: R134a+R404A: Manifold: FR1002BP; Refrigerants: E02; Reference: FR1002BP-E02



# Blondelle 2 Lane Manifold



- Unique spindle valves, always tight without effort
- Class 1, 'A Lame Acier' gauges
- Ø 60 or Ø 80
- Dry, oil filled or pulse-free (only Ø 80)
- All combinations of refrigerants possible
- Sight glass and hook (also available without sightglass)
- Available with or without the appropriate charging hoses

Supplied in a Blondelle plastic carrying case including: 3 charging hoses, red, yellow and blue; length 1 m with two 1/4" SAE fittings, optional ball valves. For R410A High Resistance hoses with Teflon gaskets. Red and blue hoses are fitted with a 5/16" nut at the curved side.

Material	Other specs	Gauges		Reference			Scales		Refrigerants		
		Diameter	Type	Manifold	Dial	Option	bar	psi			
Aluminium	Complete case	60 mm	Dry	FR1103							
			Oil filled	FR1303							
	+ no sight glass	80 mm	Dry	FR1104							
			Oil filled	FR1304							
	Without case & hoses	60 mm	Oil filled	FR1305							
			Pulse-free	FR1202							
			Dry	FR0203							
			Oil filled	FR0403							
			Dry	FR0204							
			Oil filled	FR0404							
			Pulse-free	FR0302							
					E01	x	x				R12+R22+R502
					E02	x	x				R134a+R404A
					E03	x					R22+R134a+R404A
					E04	x					R134a+R404A+R507+R407C
					E05	x			x		R290+R600
					E06	x					R22+R134a+R404A+R507
					E07	x					R134a+R407Cvap/liq
					E08	x					R22+R134a+R404A+R407C
					E09	x					R134a+R22+R409Avap/liq
					E10	x					R22+R417Avap/liq
					E11	x					R134a+R404A+R407Cvap/liq
			E12	x					R134a+R22+R407Cvap/liq		
			E13	x					R507+R407Cvap/liq		
			E15	x					R410A		
			E16	x					R1270		
			E17	x					R410A+R22+R134a+R407C		
			E20	x					R744 (-1+30 Bar, -1+50 Bar)*		
			E21	x					R410A+R22+R404A+R134a		
			E23	x					R23		
			E24	x					R407Cvap/liq+R410A+R22		
			E27	x					R410A+R407C+R404A+R134a		
		E28	x					R422Dvap/liq+R422Avap/liq+R417Avap/liq			
		E33	x					R744 (-1+30 Bar, -1+60 Bar)*			
		E34	x			x		R744 (-1+30 Bar/435psi, -1+50 Bar/725psi)*			
		E38	x					R134a+R1234yf+R1234ze			
		E40	x					R227ea			
		E42	x			x		R22+R290+R600A			
		E43	x					R134a+R404A+R407F			
		E44	x					R32			
		E46	x					R407A+R407F+R404A			
		E47	x					R404A+R407A+R407F+R449A			
		E48	x					R134a+R404A+R407A+R407F			
		E49	x					R32+R410A			
		E50	x					R290+R134a+R407C+R404A			
		E51	x					R404A+R508			
		E52	x					R32+R410A+R134a+R407C			
		E53	x					R134a+R404A+R22+R449A			
		E54	x					R452a			
		E55	x					R134a+R404A+R407F+R449A			
		E56	x					R134a+R404A+R449A+R407C			
		E57	x					R134a+R404A+R407F+R407C			
		E58	x					R452a+R404A+R134a			
		E60	x					R32+R410A+R407C			
		E61	x					R448A+R449A+R407F			
		E62	x					R23+R507			
		E63	x					R448A+R449A+R450A+R452A			
		E64	x					R449Avap/liq+R448Avap/liq			
		E65	x					R449A+R452+R513+1234yf			
		E66	x					R404A+R449A+R452A+R134a			
		E67	x					R407A+R449A+R410A			
		E68	x					R448A+R449A+R452A+R455A			
		E69	x					R410A+R134a+R407Cvap/liq			
		E70	x					R404A+R448A+R449A+R134a			
		E71	x					R404A+R452A+R134a+R410A			
		E72	x					R410A+R404A+R448A+R134a			
		E73	x					R442A+R134a+R404A			
		E74	x					R32+R134a+R407C+R404A			
						V				Option: Charging hoses length 1m with ball valve	





Material	Other specs	Gauges		Reference			Scales		
		Diameter	Type	Manifold	Dial	Option	bar	psi	Refrigerants
Aluminium	Complete case	60 mm	Dry	FR1103					
			Oil filled	FR1303					
	+ no sight glass	80 mm	Dry	FR1104					
			Oil filled	FR1304					
	Without case & hoses	60 mm	Oil filled	FR1305					
			Pulse-free	FR1202					
		80 mm	Dry	FR0203					
			Oil filled	FR0403					
		Dry	FR0204						
		Oil filled	FR0404						
		Pulse-free	FR0302						
		E77	x					2* -1+20Bar	
		E78	x					R134a+R404A+R449A+R448A+R452A	
		E79	x					R134a	
		E80	x					R1234yf+R32+R407C+R134a	
		E81	x					R449+R452+R32+R134a	
		E82	x					R404A+R407F+R448A+R449A	
		E83	x					R449+R410A+R32+R134a	
	E84	x					R134a+R448A+R452A+R455A		
	E85	x					R1234yf+R1234ze+R454C+R455A		
	E86	x					2* -1+50Bar		
	E87	x					R32+R404A+R410A+R134a		
	E88	x					R134a+R404A+R449A+R452A		
	E89	x					2* -1+60Bar		
	E90	x					R410A+R454B		
	E91	x					R410A+R404A+R449A+R134a		
	E92	x					R449A+R455A+R32+R410A		
	E93	x					R134a+R513A+1234yf+R1234ze		
E94	x					R449A+R452A+R513A+R404A			
E95	x					R513A			
E96	x					R290+R454C+R455A+R1234yf			
E97	x					R134a+R407C+R513A			
E98	x					R404A+R455Avap/liq+R454Cvap/liq			
E99	x					R410A			
E101	x					R454A+R454B+R454C+R404A			
E102	x					R404A+R449A+R513A+R134a			
E104	x					R404A+R448A+R449A+R455A			
E105	x					R422Dvap/liq+R22			
					V				
							Option: Charging hoses length 1m with ball valve		

\* For transcritical references look at page 54

Bare body	Reference
Aluminium	FR0102

How to read the tables? The complete designation of a manifold comprises on the one hand the references of the manifold and gauge and on the other hand the reference of the refrigerants. E.g.: 2 lane aluminium manifold, without charging hoses, 80mm gauges, oil filled, refrigerants: R22+R134a +R404A: Manifold: FR0404; Refrigerants: E03; Reference: FR0404-E03

# Blondelle 4 Lane Manifold

4 valves



- Unique spindle valves, always tight without effort
- Class 1, 'A Lame Acier', Ø 80 gauges
- 4 lanes - 4 valves
- All combinations of refrigerants possible
- Dry, oil filled or pulse-free
- Sight glass and hook
- Available with or without the appropriate charging hoses

Supplied in a Blondelle plastic carrying case including: 3 charging hoses, red, yellow and blue; length 1,5 m with 1/4" SAE fitting, optional ball valves and 1 yellow charging line, length 1 m with 3/8" fitting. For R410A High Resistance hoses with Teflon gaskets. Red and blue hoses are fitted with a 5/16" nut at the curved side.

Valves	Manifold	Gauges Type	Reference		bar	psi	Scales
			Manifold	Dial			
4 valves	Complete case	Dry Oil filled Pulse-free	FR1108-4R FR1308-4R FR1204-4R				
	Without case & hoses	Dry Oil filled Pulse-free	FR0208-4R FR0408-4R FR0304-4R				
Special vacuum	Vacuum gauge with valve	Oil filled	FR1310				
				E01	x	x	R12+R22+R502
				E02	x	x	R134a+R404A
				E03	x		R22+R134a+R404A
				E04	x		R134a+R404A+R507+R407C
				E05	x	x	R290+R600
				E06	x		R22+R134a+R404A+R507
				E07	x		R134a+R407Cvap/liq
				E08	x		R22+R134a+R404A+R407C
				E09	x		R134a+R22+R409Avap/liq
				E10	x		R22+R417Avap/liq
				E11	x		R134a+R404A+R407Cvap/liq
				E12	x		R134a+R22+R407Cvap/liq
				E13	x		R507+R407Cvap/liq
				E15	x		R410A
				E16	x		R1270
				E17	x		R410A+R22+R134a+R407C
				E20	x		R744 (-1+30 Bar, -1+50 Bar)*
				E21	x		R410A+R22+R404A+R134a
				E23	x		R23
				E24	x		R407Cvap/liq+R410A+R22
				E27	x		R410A+R407C+R404A+R134a
				E28	x		R422Dvap/liq+R422Avap/liq+R417Avap/liq
				E33	x		R744 (-1+30Bar, -1+60Bar)*
				E34	x	x	R744 (-1+30Bar/435psi,-1+50Bar/725psi )*
				E38	x		R134a+R1234yf+R1234ze
				E40	x		R227ea
				E42	x	x	R22+R290+R600A
				E43	x		R134a+R404A+R407F
				E44	x		R32
				E46	x		R407A+R407F+R404A
				E47	x		R404A+R407A+R407F+R449A
				E48	x		R134a+R404A+R407A+R407F
				E49	x		R32+R410A
				E50	x		R290+R134a+R407C+R404A
				E51	x		R404A+R508
				E52	x		R32+R410A+R134a+R407C
				E53	x		R134a+R404A+R22+R449A
				E54	x		R452a
				E55	x		R134a+R404A+R407F+R449A
				E56	x		R134a+R404A+R449A+R407C
				E57	x		R134a+R404A+R407F+R407C
				E58	x		R452a+R404A+R134a
				E60	x		R32+R410A+R407C
				E61	x		R448A+R449A+R407F
				E62	x		R23+R507
				E63	x		R448A+R449A+R450A+R452A
				E64	x		R449Avap/liq+R448Avap/liq
				E65	x		R449A+R452+R513+1234yf
				E66	x		R404A+R449A+R452A+R134a
				E67	x		R407A+R449A+R410A
				E68	x		R448A+R449A+R452A+R455A
				E69	x		R410A+R134a+R407Cvap/liq
				E70	x		R404A+R448A+R449A+R134a
				E71	x		R404A+R452A+R134a+R410A
				E72	x		R410A+R404A+R448A+R134a
				E73	x		R442A+R134a+R404A
				E74	x		R32+R134a+R407C+R404A
					V		Option: Charging hoses length 1,5m with ball valve



Manifold		Gauges	Reference			Scales		
Valves	Other specs	Type	Manifold	Dial	Option	bar	psi	Refrigerants
4 valves	Complete case	Dry	FR1108-4R					
		Oil filled	FR1308-4R					
Special vacuum	Without case & hoses	Pulse-free	FR1204-4R					
		Dry	FR0208-4R					
	Vacuum gauge with valve	Oil filled	FR0408-4R					
		Pulse-free	FR0304-4R					
		Oil filled	FR1310					
				E77		x	x	2* -1+20Bar
				E78		x	x	R134a+R404A+R449A+R448A+R452A
				E79		x		R134a
				E80		x		R1234yf+R32+R407C+R134a
				E81		x	x	R449+R452+R32+R134a
				E82		x		R404A+R407F+R448A+R449A
				E83		x		R449+R410A+R32+R134a
				E84		x		R134a+R448A+R452A+R455A
				E85		x		R1234yf+R1234ze+R454C+R455A
				E86		x		2* -1+50Bar
				E87		x		R32+R404A+R410A+R134a
				E88		x		R134a+R404A+R449A+R452A
				E89		x		2* -1+60Bar
				E90		x		R410A+R454B
				E91		x		R410A+R404A+R449A+R134a
				E92		x		R449A+R455A+R32+R410A
				E93		x		R134a+R513A+1234yf+R1234ze
				E94		x		R449A+R452A+R513A+R404A
				E95		x		R513A
				E96		x		R290+R454C+R455A+R1234yf
				E97		x		R134a+R407C+R513A
				E98		x		R404A+R455Avap/liq+R454Cvap/liq
				E99		x	x	R410A
				E101		x		R454A+R454B+R454C+R404A
				E102		x		R404A+R449A+R513A+R134a
				E104		x		R404A+R448A+R449A+R455A
				E105		x		R422Dvap/liq+R22
					V			Option: Charging hoses length 1,5m with ball valve

\* For transcritical references look at page 54

Bare body	Reference
Central valve	FR0104
4 valves	FR0104-4R

How to read the tables? The complete designation of a manifold comprises on the one hand the references of the manifold and gauge and on the other hand the reference of the refrigerants. E.g.: 4 lane & 4 valves aluminium manifold, complete case, 80mm gauges, oil filled, refrigerants: R134a+R404A: Manifold: FR1308-4R; Refrigerants: E02; Reference: FR1308-4R-E02



# Blondelle 4 Lane Manifold

Central valve



- Unique spindle valves, always tight without effort
- Class 1, 'A Lame Acier', Ø 80 gauges
- 4 lanes - Central Valve
- All combinations of refrigerants possible
- Dry, oil filled or pulse-free
- Sight glass and hook
- Available with or without the appropriate charging hoses

Supplied in a Blondelle plastic carrying case including: 3 charging hoses, red, yellow and blue; length 1,5 m with 1/4" SAE fitting, optional ball valves and 1 yellow vacuum charging line, length 1 m with 3/8" fitting. For R410A High Resistance hoses with Teflon gaskets. Red and blue hoses are fitted with a 5/16" nut at the curved side. Optional: ball valve

Valves	Manifold	Gauges Type	Reference			bar	psi	Scales
			Manifold	Dial	Option			
Central valve	Complete case	Dry Oil filled Pulse-free	FR1108 FR1308 FR1204					
	Without case & hoses	Dry Oil filled Pulse-free	FR0208 FR0408 FR0304					
				E01		x	x	R12+R22+R502
				E02		x	x	R134a+R404A
				E03		x		R22+R134a+R404A
				E04		x		R134a+R404A+R507+R407C
				E05		x	x	R290+R600
				E06		x		R22+R134a+R404A+R507
				E07		x		R134a+R407Cvap/liq
				E08		x		R22+R134a+R404A+R407C
				E09		x		R134a+R22+R409Avap/liq
				E10		x		R22+R417Avap/liq
				E11		x		R134a+R404A+R407Cvap/liq
				E12		x		R134a+R22+R407Cvap/liq
				E13		x		R507+R407Cvap/liq
				E15		x		R410A
				E16		x		R1270
				E17		x		R410A+R22+R134a+R407C
				E20		x		R744 (-1+30 Bar, -1+50 Bar)*
				E21		x		R410A+R22+R404A+R134a
				E23		x		R23
				E24		x		R407Cvap/liq+R410A+R22
				E27		x		R410A+R407C+R404A+R134a
				E28		x		R422Dvap/liq+R422Avap/liq+R417Avap/liq
				E33		x		R744 (-1+30Bar, -1+60Bar)*
				E34		x	x	R744 (-1+30Bar/435psi,-1+50Bar/725psi )*
				E38		x		R134a+R1234yf+R1234ze
				E40		x		R227ea
				E42		x	x	R22+R290+R600A
				E43		x		R134a+R404A+R407F
				E44		x		R32
				E46		x		R407A+R407F+R404A
				E47		x		R404A+R407A+R407F+R449A
				E48		x		R134a+R404A+R407A+R407F
				E49		x		R32+R410A
				E50		x		R290+R134a+R407C+R404A
				E51		x		R404A+R508
				E52		x		R32+R410A+R134a+R407C
				E53		x		R134a+R404A+R22+R449A
				E54		x		R452a
				E55		x		R134a+R404A+R407F+R449A
				E56		x		R134a+R404A+R449A+R407C
				E57		x		R134a+R404A+R407F+R407C
				E58		x		R452a+R404A+R134a
				E60		x		R32+R410A+R407C
				E61		x		R448A+R449A+R407F
				E62		x		R23+R507
				E63		x		R448A+R449A+R450A+R452A
				E64		x		R449Avap/liq+R448Avap/liq
				E65		x		R449A+R452+R513+1234yf
				E66		x		R404A+R449A+R452A+R134a
				E67		x		R407A+R449A+R410A
				E68		x		R448A+R449A+R452A+R455A
				E69		x		R410A+R134a+R407Cvap/liq
				E70		x		R404A+R448A+R449A+R134a
				E71		x		R404A+R452A+R134a+R410A
				E72		x		R410A+R404A+R448A+R134a
				E73		x		R442A+R134a+R404A
				E74		x		R32+R134a+R407C+R404A
						V		Option: Charging hoses length 1,5m with ball valve



Valves	Manifold Other specs	Gauges Type	Reference			Scales		
			Manifold	Dial	Option	bar	psi	Refrigerants
Central valve	Complete case	Dry Oil filled Pulse-free	FR1108 FR1308 FR1204					
	Without case & hoses	Dry Oil filled Pulse-free	FR0208 FR0408 FR0304					
			E77			x	x	2* -1+20Bar
			E78			x	x	R134a+R404A+R449A+R448A+R452A
			E79			x		R134a
			E80			x		R1234yf+R32+R407C+R134a
			E81			x	x	R449+R452+R32+R134a
			E82			x		R404A+R407F+R448A+R449A
			E83			x		R449+R410A+R32+R134a
			E84			x		R134a+R448A+R452A+R455A
			E85			x		R1234yf+R1234ze+R454C+R455A
			E86			x		2* -1+50Bar
			E87			x		R32+R404A+R410A+R134a
			E88			x		R134a+R404A+R449A+R452A
			E89			x		2* -1+60Bar
			E90			x		R410A+R454B
			E91			x		R410A+R404A+R449A+R134a
			E92			x		R449A+R455A+R32+R410A
			E93			x		R134a+R513A+1234yf+R1234ze
			E94			x		R449A+R452A+R513A+R404A
			E95			x		R513A
			E96			x		R290+R454C+R455A+R1234yf
			E97			x		R134a+R407C+R513A
			E98			x		R404A+R455Avap/liq+R454Cvap/liq
			E99			x	x	R410A
			E101			x		R454A+R454B+R454C+R404A
			E102			x		R404A+R449A+R513A+R134a
			E104			x		R404A+R448A+R449A+R455A
			E105			x		R422Dvap/liq+R22
					V			Option: Charging hoses length 1,5m with ball valve

\* For transcritical references look at page 54

Bare body	Reference
Central valve	FR0104
4 valves	FR0104-4R

How to read the tables? The complete designation of a manifold comprises on one hand the references of the manifold and gauge and on the other hand the reference of the refrigerants. E.g.: 4 lane & central valve aluminium manifold, 80mm gauges, oil filled, charging hoses length 1,5m with ball valve, Refrigerants: R407C Vap.Liq.+R410A+R22: Manifold: FR1308; Refrigerants: E24; Reference: FR1308-E24-V

## Blondelle 2 Lane CO2 Manifold

Transcritical



- Refrigerant: R744 (CO2)
- Transcritical: 80/100 bar & 160/200 bar - Bar-°C & Psi-°F
- 2 lane manifold, aluminium body
- Unique spindle valves, always tight without effort
- Class 1, 'A Lame Acier' Ø 80 or Ø 100 gauges
- Dry, oil filled (Ø 80), pulse-free

Supplied in a Blondelle plastic carrying case including:  
Transcritical: 3 hoses, length 1meter with 1/4" SAE fittings, WP 200 Bar.

Material	Other specs	Gauges		Reference			Scales		
		Diameter	Type	Manifold	Dial	Option	bar	psi	Refrigerants
Aluminium	Transcritical (complete case)	80 mm	Dry	FR4112					
			Oil filled	FR4312					
		100 mm	Pulse-free	FR4512					
			Dry	FR5512					
	Transcritical (Case without hoses)	80 mm	Pulse-free	FR5513					
			Dry	FR4102					
		100 mm	Oil filled	FR4302					
			Pulse-free	FR4502					
		Dry	FR5502						
			Pulse-free	FR5503					
				E25		x		R744 (-1+80 Bar, -1+160 Bar)	
				E30		x		R744 (-1+100Bar, -1+160Bar)	
				E37		x	x	R744 (-1+80/1200, -1+160/2300 Bar/Psi)	
				E75		x		R744 (-1+80Bar, -1+200Bar)	
				E76		x		R744 (-1+100Bar, -1+200Bar)	
				E103		x	x	R744 (-1+100/1400, -1+160/2300 Bar/Psi)	
						V		Option: charging hoses with isolation valve	

## Blondelle 2 Lane CO2 Manifold

Subcritical



- Refrigerant: R744 (CO2)
- Subcritical: 30 bar & 50/60 bar - Bar-°C & Psi-°F
- 2 lane manifold, aluminium body
- Unique spindle valves, always tight without effort
- Class 1, 'A Lame Acier' Ø 80
- Dry, oil filled, pulse-free

Supplied in a Blondelle plastic carrying case including:  
Subcritical: 3 hoses, red, blue and yellow, length 1 meter with 1/4" SAE fittings.

Material	Other specs	Gauges		Reference			Scales		
		Diameter	Type	Manifold	Dial	Option	bar	psi	Refrigerants
Aluminium	2-way - Subcritical (complete case) + no sight glass	80 mm	Dry	FR1104					
			Oil filled	FR1304					
			Oil filled	FR1305					
			Pulse-free	FR1202					
	4-way - Subcritical	Oil-filled	FR1308						
			Oil-filled	FR1308-4R					
	4-way-4-valves-Sub				E20		x		R744 (-1+30 Bar, -1+50 Bar)
					E33		x		R744 (-1+30 Bar, -1+60 Bar)
					E34		x	x	R744 (-1+30/435, -1+50/725 Bar/Psi)
							V		Option: charging hoses with ball valve

Bare body	Reference
Subcritical	FR0102

How to read the tables? The complete designation of a manifold comprises on the one hand the references of the manifold and gauge and on the other hand the reference of the refrigerants.  
E.g.: 2 lane aluminium manifold, complete case, 80mm gauges, oil filled, refrigerant: R744, pressure: -1+30Bar, -1+50Bar: Manifold: FR1304; Refrigerants: E20; Reference: FR1304-E20



## Blondelle 4 Lane CO2 Manifold

Transcritical



- Refrigerant: R744 (CO2)
- Transcritical: 80/100 bar & 160/200 bar - Bar-°C & Psi-°F
- 4 lane manifold, aluminium body
- Unique spindle valves, always tight without effort
- Class 1, 'A Lame Acier' Ø 80 gauges
- Dry, oil filled, pulse-free

Supplied in a Blondelle plastic carrying case including:  
Transcritical: 4 hoses, length 1,5meter with 1/4" SAE fittings, WP 200 Bar.

Material	Other specs	Gauges		Reference			Scales		
		Diameter	Type	Manifold	Dial	Option	bar	psi	Refrigerants
Aluminium	4-lane - Transcritical (complete case)	80 mm	Dry Oil filled Pulse-free	FR4118-4R FR4318-4R FR4518-4R	E25 E30 E37 E75 E76 E103		x x x x x x		R744 (-1+80 Bar, -1+160 Bar) R744 (-1+100Bar, -1+160Bar) R744 (-1+80/1200, -1+160/2300 Bar/Psi) R744 (-1+80Bar, -1+200Bar) R744 (-1+100Bar, -1+200Bar) R744 (-1+100/1400, -1+160/2300 Bar/Psi)
						V		x	Option: charging hoses with isolation valve

## Blondelle Isolation Valves for CO2 Hoses - Transcritical

200Bar working pressure



- Optional valves for CO2 hoses
- 200Bar working pressure
- CO2 / R744 (LP & HP)
- 1/4"SAE male - 1/4"SAE female swivel nut

Reference	Description
AC0107-R744	CO2 Transcritical Hose Shut-off valve

## Blondelle CO2 Charging Equipment

Liquid & Gas



- Refrigerant: R744 (CO2)
- Charging equipment with regulator for CO2
- Liquid & Gas - Dedicated liquid filler adaptor
- Choice between 60 or 300 Bar pressure inlet
- Choice between: 10 - 50 - 200 Bar pressure reducer
- 1,8m highpressure hose with anti-whip cable
- 1/4"SAE female
- Direct connection on the CO2 bottle



Version	Hose	Isolation valve	Liquid connector	Reference		Pressure (max.)	
				Reducer	Type	Inlet	Outlet
Complete	x	x	x	FR4612			
Without Acc.				FR4602	E25	60Bar	10Bar
					E35	300Bar	50Bar
					E36	300Bar	200Bar



## Blondelle CO2 Manifold with Quick-Couplers

Transcritical CO2 applications with SAE J639 Quick-Couplers



- Refrigerant: R744 (CO2)
- Transcritical: 80 bar & 160 bar (°F & PSI)
- 2 lane manifold, aluminium body
- Unique spindle valves, always tight without effort
- Class 1, 'A Lame Acier' Ø 80 gauges, Oil filled
- Hoses of 1,5m. Optional: Different lengths / Safety cable / Stainless steel sleeve

Supplied in a Blondelle plastic carrying case including:  
 Transcritical: 2 hoses, length 1,5meter with 1/4"SAE-1/4"NPT fittings for QCs, WP 200 Bar  
 + 1 service hose 1,5m, 1/4"SAE-1/4"SAE WP 200 Bar

Material	Other specs	Gauges		Reference			Scales		
		Diameter	Type	Manifold	Dial	Option	bar	psi	Refrigerants
Aluminium	Refrigeration SAE-J639 Airco SAE-J639 DIN SPEC74119	80 mm	Oil filled	FR4414					
				FR4424	E25		x		R744 (-1+80 Bar, -1+160 Bar)
					E30		x		R744 (-1+100Bar, -1+160Bar)
					E37		x	x	R744 (-1+80/1200, -1+160/2300 Bar/Psi)
						V			Option: charging hoses with shut-off valve

## Blondelle Refrigeration & Airconditioning CO2 Quick Couplers

CO2 Quick-couplers



- CO2 Quick Couplers
- Refrigeration SAE-J639: Reefer Containers, Trucks, Trailers
- Automotive airconditioning: SAE-J639 & DIN SPEC 74119
- CO2 / R744 (LP & HP)
- Pressure rating 200Bar

Reference	Description
FR1501-8793	CO2 LP quick coupler - refrigeration
FR1501-8794	CO2 HP quick coupler - refrigeration
FR1501-8795	CO2 LP quick coupler - automotive airconditioning
FR1501-8796	CO2 HP quick coupler - automotive airconditioning





## Blondelle 2 Lane NH3 Manifold

Total ammonia resistant manifold



- Completely ammonia resistant design
- All parts in contact with ammonia are stainless (inox 316L)
- 2 lane manifold (also available in 4-way on demand)
- Unique spindle valves, always tight without effort
- Class 1, 'A Lame Acier' Ø 80 or Ø 100 gauges
- Dry, oil filled (Ø 80), pulse-free

Supplied in a Blondelle plastic carrying case including: 3 hoses, length 1,5 meter with 1/4" GAS-1/4"GAS or 1/4"GAS-1/4"SAE fittings.

Material	Other specs	Gauges		Reference			Scales		
		Diameter	Type	Manifold	Dial	Option	bar	psi	Refrigerants
Aluminium	Complete case (1/4"GAS-1/4"GAS)	80 mm	Dry	FR2102					
			Oil filled	FR2302					
			Pulse-free	FR2502					
		100 mm	Dry	FR2103					
			Pulse-free	FR2503					
	Complete case (1/4"GAS-1/4"SAE)	80 mm	Dry	FR2602					
			Oil filled	FR2702					
			Pulse-free	FR2802					
		100 mm	Dry	FR2603					
			Pulse-free	FR2803					
	Case without hoses	80 mm	Dry	FR3102					
			Oil filled	FR3302					
			Pulse-free	FR3502					
100 mm		Dry	FR3103						
		Pulse-free	FR3503						
			E26			x		R717 (-1+10 Bar, -1+30 Bar)	
			E31			x		R717+R723 (-1+10 Bar, -1+30 Bar)	

### How to read the tables?

The complete designation of a manifold comprises on the one hand the references of the manifold and gauge and on the other hand the reference of the refrigerants.

E.g.: 2 lane aluminium manifold, complete case, 80mm gauges, oil filled, refrigerant: NH3:

Manifold: FR2302; Refrigerants: E26; Reference: FR2302-E26

## Blondelle 2 Lane Manifold, Ø 100

All refrigerants in one manifold.



- All combinations of refrigerants possible, up to 6 on 1 dial.
- Unique spindle valves, always tight without effort
- Class 1, 'A Lame Acier' gauges
- Ø 100, pulse-free
- 2 lane manifold
- Sight glass and hook
- Available with or without the appropriate charging hoses

Supplied in a Blondelle plastic carrying case including: 3 charging hoses, red, yellow and blue; length 1 m with 1/4" SAE fitting. Option: 1/4" SAE – 5/16" SAE adaptors

Material	Other	Gauges		Reference			Scales						
		Diameter	Type	Manifold	Dial	Option	bar	psi	Refrigerants				
Aluminium	Complete case	100 mm	Pulse-free	FR5802	E100		x		R22+R134a+R404A+R410A+R407C vap/liq				
					E42		x		R134a+R404A				
					Description of the option								
					A							2 1/4" SAE-5/16" SAE adaptors	

Other refrigerant combinations are possible.  
See p. 34-41 (Blondelle D100 gauge) or contact Panimex.

## Blondelle Accessories for Manifolds



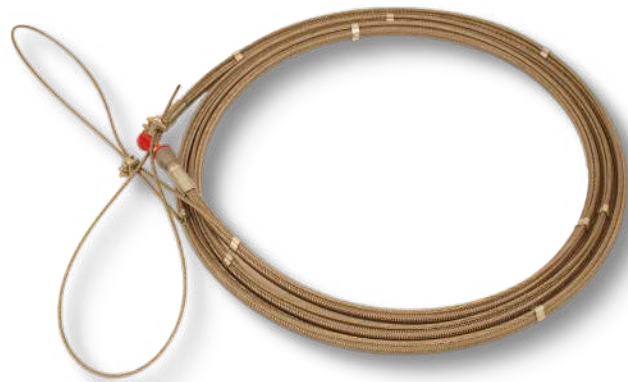
Part	Specification	Reference
Hook	All	AC0101
Carrying case	HFCs-HFOs & NH3	AC0102-02
	CO2 Transcritical	AC0102-03
Valve kit	HFCs-HFOs	AC0103-RES
Valve gaskets	HFCs -HFOs	AC0103-VAN
	CO2 Transcritical	AC0103-VAN-CO2
	NH3	AC0103-VAN-NH3
Central valve service kit	Central valve	AC0103-VAN-CEN
Valves	Blue (LP)	AC0104-BP-KIT
	Red (HP)	AC0104-HP-KIT
	Yellow (Vac.)	AC0104-VI-KIT
	Black (Charge)	AC0104-CH-KIT
	CO2 Transcr. Blue	AC0104-BP-CO2
	CO2 Transcr. Red	AC0104-HP-CO2
	CO2 Transcr. Yellow	AC0104-VI-CO2
	CO2 Transcr. Black	AC0104-CH-CO2
	NH3 Blue (LP)	AC0104-BP-NH3-KIT
	NH3 Red (HP)	AC0104-HP-NH3-KIT
Sight glass service kit	HFCs-HFOs	AC0106-7393
Anti-impact protection (only for vertical fitting)	Ø 60 mm Red	AC0308-6123.02
	Ø 60 mm Blue	AC0308-6123.03
	Ø 60 mm Yellow	AC0308-6123.04
	Ø 80 mm Red	AC0308-6124.02
	Ø 80 mm Blue	AC0308-6124.03
	Ø 80 mm Yellow	AC0308-6124.04



**BLONDELLE ACCESSORIES**

**HOSES & SPARES**

**AUTOMOTIVE & WHITE GOODS**



## Blondelle Charging Hoses



- Hoses for all HFCs and HFOs as well as for CO<sup>2</sup> and NH<sub>3</sub>
- Working pressures ranging from 40 bar to 285 bar (depending on diameter and material)
- Diameter : 1/4", 5/16", 3/8", 1/2", 5/8", 3/4", 1", 2"
- Material : Standard refrigeration hoses, reinforced thermoplastic or braided stainless steel
- Gaskets: neoprene, teflon, copper
- Fittings: standard is female, also available in male, other threads available on demand  
 1/4"SAE, 5/16"SAE, 3/8"SAE, etc.  
 1/4"GAS, 3/8"GAS, 1/2"GAS, 3/4"GAS, etc.  
 1/4"NPT, 1/2"NPT, 1"NPT, 2"NPT, etc.
- The standard lengths are 1m, 1,5m, 2m, 3m and 5m (other lengths available on demand)
- Anti-whip cable on selected models (available on other types on demand)

Hose	Diameter	Strength - Use - Type	Fittings	Gasket	Color	Length (cm)
X	x	x	X	x	x	-xxx
S	4 (1/4")	0 40bar - HFC/HFO	A R-1/4SAE - G-1/4SAE - BR - SD	0 Neoprene	2 Red	100
		1 55bar - R410A/R32/R744Sub	B R-1/4SAE - G-1/4SAE-BV - BR - SD	1 Teflon (SAE)	3 Blue	150
		2 200bar - CO <sub>2</sub> /NH <sub>3</sub> - thermoplastic & braided	C R-1/4SAE - G-5/16SAE - BR - SD	2 Copper	4 Yellow	200
	8 (3/8")	3 135bar - CO <sub>2</sub> /NH <sub>3</sub> - braided	D R-1/4SAE - G-5/16SAE-BV - BR - SD	3 Teflon (GAS)	5 Black	300
		4 175bar - CO <sub>2</sub> /NH <sub>3</sub> - thermoplastic	E R-1/4SAE - R-1/4SAE - GS	4 None	6 Braided	500
		5 285bar - CO <sub>2</sub> /NH <sub>3</sub> - double braided	F R-1/4SAE - R-1/4NPT - GS			1000
	2 (1/2")	6 120bar - CO <sub>2</sub> /NH <sub>3</sub> - braided	G R-1/4SAE - R-3/8SAE - BR - SD			1500
		7 140bar - CO <sub>2</sub> /NH <sub>3</sub> - thermoplastic	H R-1/4GAS - R-1/4GAS - GS			2000
	5 (5/8")	8 105bar - CO <sub>2</sub> /NH <sub>3</sub> - thermoplastic	I R-3/8SAE - G-3/8SAE - BR - SD			2500
		10 (1")	9 50bar - CO <sub>2</sub> /NH <sub>3</sub> - braided	J R-1/4SAE - R-1/4SAE - BR - SD		3000
	20 (2")	10 34bar - CO <sub>2</sub> /NH <sub>3</sub> - braided	K R-3/8SAE - R-3/8SAE - BR - SD			5000
		6 (3/4")	11 90bar - CO <sub>2</sub> /NH <sub>3</sub> - braided	L R-1/4GAS - R-1/4SAE - GS		
	9 (5/16")	12 90bar - CO <sub>2</sub> /NH <sub>3</sub> - thermoplastic	M R-5/16SAE - G-5/16SAE - BR - SD			
13 190bar - CO <sub>2</sub> /NH <sub>3</sub> - thermoplastic		N G-1/4SAE-BV - G-1/4SAE-BV - BR - SD				
		O R-5/16SAE - G-5/16SAE-BV - BR - SD				
		P R-1/4SAE - R-1/4SAE - GS - AW				
		Q R-3/8SAE - R-3/8SAE - GS - AW				
		R R-1/4NPT - R-1/4NPT - GS				
		S R-3/8GAS - R-3/8GAS - GS - AW				
		T R-1/4SAE - R-1/4SAE - GS - SD - AW				
		U R-1/2GAS - R-1/2GAS - GS				
		V R-1/4SAE - R-1/4SAE - GS - SD				
		W R-1/4SAE - R-1/4SAE - GS - AW -PP				
		Y R-1/4SAE - G-1/4SAE - GS - AW				
		Z R-1/4SAE - R-1/4GGS-M				

*Fittings are standard Female unless otherwise mentioned (M - Male)*  
*R - Straight fitting*  
*G - Bent fitting*  
*M - Male fitting*  
*BR - Brass*  
*GS - Galvanized Steel*  
*BV - Ball Valve*  
*SD - Schraeder Depressor (2nd side)*  
*AW - Anti-Whip Cable*  
*PP - Plastic Protection (only on braided)*  
*LH - Left Hand Thread*



Hose	Diameter	Strength - Use - Type	Fittings	Gasket	Color	Length (cm)
X	x	x	X	x	x	-xxx
S	4 (1/4)	0 40bar - HFC/HFO	AC R-3/8SAE - R-3/8SAE - GS	0 Neoprene	2 Red	100
		1 55bar - R410A/R32/R744Sub	AD R-1/4GAS - R-1/2GAS - GS	1 Teflon (SAE)	3 Blue	150
		2 200bar - CO2/NH3 - thermoplastic & braided	AE R-1/4SAE - R-1/4NPT-M - GS - AW	2 Copper	4 Yellow	200
	8 (3/8)	3 135bar - CO2/NH3 - braided	AF R-3/8SAE-M - R-3/8SAE-M - GS	3 Teflon (GAS)	5 Black	300
		4 175bar - CO2/NH3 - thermoplastic	AG R-3/8SAE-M - R-3/8SAE-M - GS - AW	4 None	6 Braided	500
		5 285bar - CO2/NH3 - double braided	AH R-1/2GAS-M - R-1/2GAS-M - GS			1000
	2 (1/2)	6 120bar - CO2/NH3 - braided	AI R-1/2GAS-M - R-1/2GAS-M - GS - AW			1500
		7 140bar - CO2/NH3 - thermoplastic	AJ R-1/2GAS - R-1/2GAS - GS - AW			2000
	5 (5/8")	8 105bar - CO2/NH3 - thermoplastic	AO R-1/4SAE - R-1/4NPT - GS - AW			2500
	10 (1")	9 50bar - CO2/NH3 - braided	AP R-1"NPT-M - R-1"NPT-M - GS			3000
	20 (2")	10 34bar - CO2/NH3 - braided	AQ R-2"NPT-M - R-2"NPT-M - GS			5000
	6 (3/4")	11 90bar - CO2/NH3 - braided	AR R-3/4GAS - R-3/4GAS - GS			
	9 (5/16")	12 90bar - CO2/NH3 - thermoplastic	AS R-3/8GAS-LH - R-1/4SAE-M - GS			
13 190bar - CO2/NH3 - thermoplastic		AT R-5/16SAE - R-5/16SAE - BR				
		AU R-5/16SAE - G-1/4SAE - BR				
		AV R-1/2SAE - G-1/2SAE - GS - AW				

*Fittings are standard Female unless otherwise mentioned (M - Male)*  
*R - Straight fitting*  
*G - Bent fitting*  
*M - Male fitting*  
*BR - Brass*  
*GS - Galvanized Steel*  
*BV - Ball Valve*  
*SD - Schraeder Depressor (2nd side)*  
*AW - Anti-Whip Cable*  
*PP - Plastic Protection (only braided)*  
*LH - Left Hand Thread*



How to read the tables? Run through the table from left to right and choose the desired diameter, strength - use - type, fittings, gaskets, color and length.  
 E.g.: Reference: S83Q46-300 : (S)Hose, (8)3/8", (3)working pressure 135Bar - CO2/NH3 - braided stainless steel, (Q)3/8SAE-3/8SAE, (4)no gaskets, (6)braided, (300)3m



# Blondelle Charging Hoses - Typical versions

Set of charging hoses for CFC, HCFC and HFC							
Colour	Refrigerant	Fitting	Gaskets	Extra	Type	Length	Explanation
Red	Standard	Straight side 1/4" SAE - Bow side 1/4" SAE	Neoprene	Ball valve	S40A02	100 150 200 300 500 >5m	100 cm 150 cm 200 cm 300 cm 500 cm on demand
			Neoprene		S40B02		
Blue	R410A	Straight side 1/4" SAE - Bow side 5/16" SAE	Teflon	Ball valve	S40A12		
			Teflon		S40B12		
	Teflon		Ball valve	S41C12			
	Teflon			S41D12			
Standard	Straight side 1/4" SAE - Bow side 1/4" SAE	Neoprene	Ball valve	S40A03			
		Neoprene		S40B03			
R410A	Straight side 1/4" SAE - Bow side 5/16" SAE	Teflon	Ball valve	S40A13			
		Teflon		S40B13			
Standard	Straight side 1/4" SAE - Bow side 1/4" SAE	Teflon	Ball valve	S41C13			
		Teflon		S41D13			
Yellow	Standard	Straight side 1/4" SAE - Bow side 1/4" SAE	Neoprene	Ball valve	S40A04		
			Neoprene		S40B04		
			Teflon	Ball valve	S40A14		
			Teflon		S40B14		
			Teflon	Ball valve	S40G04		
			Neoprene		S40G14		
Neoprene	S40J04						
Teflon	S40J14						

Hoses for CO2 (R744) & NH3 (R717)							
Colour	Refrigerant	Fitting	Gaskets	Extra	Type	Length	Explanation
Red	CO2 Subcritical	Straight side 1/4" SAE - Bow side 1/4" SAE	Teflon	Ball valve	S41A12	100 150 200 300 500 >5m	100 cm 150 cm 200 cm 300 cm 500 cm on demand
Blue	CO2 Subcritical	Straight side 1/4" SAE - Bow side 1/4" SAE	Teflon		S41B12		
Yellow	CO2 Subcritical	Straight side 1/4" SAE - Bow side 1/4" SAE	Teflon	Ball valve	S41A13		
			Teflon		S41B13		
Black	CO2 Transcritical	Straight side 1/4" SAE - Straight side 1/4" SAE	Teflon	Ball valve	S41A14		
			Teflon		S41B14		
NH3	NH3	Straight side 1/4" GAS - Straight side 1/4" GAS	Copper	Schraeder Depressor	S42E25		
			PTFE		S42H35		
			PTFE		S42L35		
Braided	CO2 Transcritical	Straight side 1/4" SAE - Straight side 1/4" SAE	Copper	Schraeder Depressor	S42V25		
			Copper		S42P26		
			Copper		Schraeder Depressor	S42T26	
			Copper			S83Q46	
			Copper			S83Q46	

# Blondelle Charging Hoses - Typical sets



Set of charging hoses for CFC, HFC, HCFC, CO2 & NH3					
Refrigerant	Fitting	Gaskets	Length	Extra	Type
Standard, WP 40bar	1/4"SAE - 1/4"SAE	Neoprene	100 cm		T3AA
			150 cm	Ball valve	T3AB
			200 cm		T3AC
			300 cm	Ball valve	T3AD
			100 cm		T3BI
			150 cm	Ball valve	T3BG
		Teflon	100 cm		T3AE
			150 cm	Ball valve	T3AF
			200 cm		T3AG
			300 cm	Ball valve	T3AH
			500 cm		T3BJ
			1000 cm	Ball valve	T3BH
R410A, WP 55bar	3/8"SAE - 3/8"SAE	Teflon	100 cm		T3BK
			150 cm		T3BN
			100 cm		T3AM
			150 cm		T3AO
R410A, WP 55bar	1/4"SAE-5/16"SAE	Teflon	100 cm		T3AI
			150 cm	Ball valve	T3AJ
			200 cm		T3AK
			200 cm	Ball valve	T3AL
			200 cm	Ball valve	T3BL
			200 cm	Ball valve	T3BM
CO2 Subcritical, WP 55bar	1/4"SAE-1/4"SAE	Teflon	100 cm		T3AQ
			150 cm	Ball valve	T3AZ
			150 cm		T3AR
			200 cm	Ball valve	T3BA
			200 cm		T3BC
			200 cm		T3BD
CO2 Transcritical, WP 200bar	1/4"SAE-1/4"SAE	Copper	100 cm		T3BE
			150 cm		T3DV
			300 cm		T3DM
			500 cm		T3AV
			100 cm		T3AW
			150 cm		T3AX
NH3, WP 200bar	1/4"GAS-1/4"GAS	EPDM	100 cm		T3AY
			150 cm		T3DQ
			150 cm		T3DW
	1/4"GAS-1/4"SAE		100 cm		
			150 cm		
			150 cm		
CO2 Transcritical, WP-200Bar Braided stainless steel, with Safety Cable	1/4"SAE-1/4"SAE	Copper	300 cm		
			500 cm		



Spare Parts	Type	Reference
Bag of 6 gaskets	Neoprene (1/4"SAE)	AC0103-TUYN
	Teflon (1/4"SAE)	AC0103-TUYT
	Copper (1/4"SAE CO2Tr.)	AC0103-TUYC
	Teflon (1/4"GAS)	AC0103-TUYE
Bag of 3 Schrader depressors	/	AC0105

## Blondelle Residential - White Goods

Gauges & Manifolds for White goods appliances



- 7bar - 100 psi gauge with extended vacuum zone in inhg and mbar
- With or without Refrigerant temperature : R134a & R600a
- Developed for the residential service engineer
- Unique spindle valve, always tight without effort
- Class 1, 'A Lame Acier' Ø 80 oil filled gauge

Reference	Description
FR1002-E35	Manifold with gauge, hoses, hook and gasket service kit
FR1002-E35V	Manifold with gauge, hoses with ball valves, hook and gasket service kit
MA1003V18B-1198	Replacement gauge with 1/8"NPT connection

## Blondelle Spindle Valve Mechanism

Unique valve, always tight without effort

*Valve closed*



*Valve opened*







## Blondelle F-GAS - PED Calibration Gauge

High precision gauge with 'aged and stabilised' mechanics - 3 pressure ranges



- PED Calibration gauge
- Used for PED pressure testing and for verification of service manifolds
- Comes with a certificate referring to a higher standard
- Aged and stabilised mechanics
- Class 0,5
- 'A Lame Acier', dry gauge
- 25Bar Ø100, 60Bar Ø150, 180Bar Ø100
- Storage case

### Reference:

- 0-25Bar : MA1202V14S-4031-82-CET
- 0-60Bar : MA1305V14S-9038-82-CET
- 0-180Bar : MA1202V14S-4016-82-CET

## Blondelle Automotive

Automotive tools & accessories



- Refrigerant: R134a & HFO R1234yf & R1234ze & R744 (CO2)
- 2 lane manifold, aluminium body
- Unique spindle valves, always tight without effort
- Class 1, 'A Lame Acier' Ø 80 gauges
- Dry, oil filled (Ø 80), pulse-free

Supplied in a Blondelle plastic carrying case including:  
2-way manifold with hook, 3 hoses, red, blue and yellow, length 1 meter with 1/4" SAE fittings.

Material	Other specs	Gauges		Reference			Scales		
		Diameter	Type	Manifold	Dial	Option	bar	psi	Refrigerants
Aluminium	Complete case & hoses	80 mm	Dry	FR1104					R134a+R1234yf+R1234ze
			Oil filled	FR1304					
			Pulse-free	FR1202					
	Complete case & hoses & Quick Couplers Airco SAE-J639 DIN SPEC74119	Oil filled	FR4424	E38		x	x		
				E25		x		R744 (-1+80 Bar, -1+160 Bar)	
E37		x	x	R744 (-1+80/1200, -1+160/2300 Bar/Psi)					
						V	Option: charging hoses with ball valve		

How to read the tables?

The complete designation of a manifold comprises on the one hand the references of the manifold and gauge and on the other hand the reference of the refrigerants.

E.g.: 2 lane aluminium manifold, complete case, 80mm gauges, oil filled: Manifold: FR1304; Refrigerants: E38; Reference: FR1304-E38

## Blondelle Automotive Quick Couplers

Standard / OEM - BMW / CO2



- Automotive airconditioning quick couplers
- Standard (LP & HP)
- BMW (OEM-version)
- CO2 / R744 (LP & HP) - Automotive airconditioning: SAE-J639 & DIN SPEC 74119

Reference	Description
FR1501-6472	LP quick coupler
FR1501-6473	HP quick coupler
FR1501-6475	HP BMW quick coupler (OEM)

Reference	Description
FR1501-8795	CO2 LP quick coupler - automotive airconditioning
FR1501-8796	CO2 HP quick coupler - automotive airconditioning



# BLONDELLE VACUUM GAUGES

BLONDELLE VACUUM GAUGES



# Blondelle Vacuum Gauge, Ø 60, Composite

High-end vacuum gauge



- High accuracy vacuum gauge
- Vacuum gauge: -760 mmHg to 0 or -1000 mbar to 0
- Pseudo-absolute: 0 +1000 mbar or 0 +1000 mbar/inHg
- Class 1, 'A Lame Acier'
  
- Ø 60, dry or oil filled
- Outlet: vertical or rear
- Fitting: 1/4" SAE or 1/8" NPT
- Options: safety valve, indicator needle, 1/4" SAE female fitting

Version	Outlet	Fitting	Reference			Scales			
			Case	Dial	Option	Relative	Pseudo-absolute		
Dry	Vertical	1/4" SAE	MA0602V14S						
		1/8" NPT	MA0602V18B						
	Rear	1/4" SAE	MA0602A14S						
		1/8" NPT	MA0602A18B						
Oil filled	Vertical	1/4" SAE	MA1002V14S						
		1/8" NPT	MA1002V18B						
	Rear	1/4" SAE	MA1002A14S						
		1/8" NPT	MA1002A18B						
					6099			-760 mmHg to 0	
					6103			-1000 mbar to 0	
					6089				0+1000 mbar
								Description of the options	
				28	Safety valve (+60Bar)				
				01	Indicator needle (not for oilfilled)				
				45	1/4" SAE female fitting				
				AC	Anti-impact protection				

**How to read the tables?**

The complete designation of a vacuum gauge comprises the reference of the casing, followed by the reference of the dial.

E.g.: Vacuum gauge D60mm composite, oil filled, rear outlet, 1/4"SAE, -1000mbar to 0, needle indicator:  
Case: MA1002A14S; Dial: 6103; Option 01; Reference: MA1002A14S-6103-01



# Blondelle Vacuum Gauge, Ø 80, Composite

High-end vacuum gauge



- High accuracy vacuum gauge
- Vacuum gauge: -760 mmHg to 0 or -1000 mbar to 0
- Pseudo-absolute: 0 +1000 mbar or 0 +1000 mbar/inHg
- Class 1, 'A Lame Acier'
  
- Ø 80, dry, oil filled or pulse-free
- Outlet: vertical or rear
- Fitting: 1/4" SAE or 1/8" NPT
- Options: safety valve, indicator needle, 1/4" SAE female fitting

Version	Outlet	Fitting	Reference			Scales	
			Case	Dial	Option	Relative	Pseudo-absolute
Dry	Vertical	1/4" SAE	MA0603V14S				
		1/8" NPT	MA0603V18B				
	Rear	1/4" SAE	MA0603A14S				
		1/8" NPT	MA0603A18B				
Oil filled	Vertical	1/4" SAE	MA1003V14S				
		1/8" NPT	MA1003V18B				
	Rear	1/4" SAE	MA1003A14S				
		1/8" NPT	MA1003A18B				
Pulse-free	Vertical	1/4" SAE	MA0901V14S				
		1/8" NPT	MA0901V18B				
	Rear	1/4" SAE	MA0901A14S				
		1/8" NPT	MA0901A18B				
						-760 mmHg to 0	
						-1000 mbar to 0	
							0+1000 mbar
Description of the options							
					28	Safety valve (+60Bar)	
					01	Indicator needle (not for oilfilled)	
					45	1/4" SAE female fitting	
					AC	Anti-impact protection	

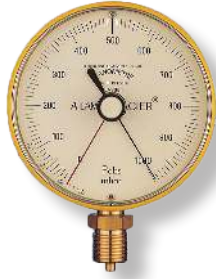
### How to read the tables?

The complete designation of a vacuum gauge comprises the reference of the casing, followed by the reference of the dial.

E.g.: Vacuum gauge D80mm composite, dry, rear outlet, 1/4"SAE, 0+1000mbar, needle indicator, safety valve: Case: MA0603A14S; Dial: 6090; Option: 2801; Reference: MA0603A14S-6090-2801

## Blondelle Vacuum Gauge Ø100, Aluminium

High-end vacuum gauge



- High accuracy vacuum gauge
- Absolute reading possible by adjusting the needle to the day's atmospheric pressure
- Ø 100, aluminium case
- Class 1, 'A Lame Acier'
- Fitting: 1/2" GAZ, 1/4" SAE or 1/8" NPT
- Dry
- Options: safety valve, indicator needle, 1/4" SAE female fitting

Version	Outlet	Fitting	Reference			Scales	
			Case	Dial	Option	Pseudo-absolute	Description of the options
Dry	Vertical	1/2" GAZ	MA0107V12G	1175 4040 6095		-250mbar+0 -500mbar+500mbar 0+1000 mbar	
		1/8" NPT	MA0107V18B				
		1/4" SAE	MA0107V14S				
					28		Safety valve (+60Bar)
					01		Indicator needle
					45		1/4" SAE female fitting

**How to read the tables?**

The complete designation of a vacuum gauge comprises the reference of the casing, followed by the reference of the dial.

E.g.: Pseudo-Absolute Vacuum gauge D100mm aluminium, dry, vertical outlet, 1/2"GAZ, 0+1000mbar, indicator: needle. Case: MA0107V12G; Dial: 6095; Option: 01; Reference: MA0107V12G-6095-01

## Blondelle 4 Lane Manifold 'Special Vacuum'



- Unique spindle valves, always tight without effort
- Class 1, 'A Lame Acier' Ø 80 gauges
- 4 lanes - 4 valves
- Ø 80
- All combinations of refrigerants
- Oil filled
- Sight glass and hook
- Available with or without the appropriate charging hoses

Supplied in a Blondelle plastic carrying case including:

3 charging hoses; red, yellow and blue; length 1,5 m with 1/4" SAE fitting and 1 yellow charging hose, length 1 m with 3/8" fitting. For R410A High Resistance hoses with Teflon gaskets. Red and blue hoses are fitted with a 5/16" nut at the curved side. Optional: ball valves.

References: see p.36



# Blondelle Absolute Vacuum Gauge, Ø 100, Alu

Extreme precision



- High accuracy vacuum gauge
- Built-in absolute vacuum reference
- Eliminates the effects due to variations of the atmospheric pressure
- No re-adjustment of the needle to 0 is required
  
- 1,5 mBar precision
- Ø 100, aluminium case
- Dry
- Fitting: 1/2" Gaz or 1/4" SAE

Version	Outlet	Fitting	Reference			Scales Absolute
			Case	Dial	Option	
Dry	Vertical	1/2" GAZ 1/4" SAE	MA1501V12G MA1501V14S	6098		0+150 mbar
						Description of the option
					28 45	Safety valve (+60Bar) 1/4" SAE female fitting

### How to read the tables?

The complete designation of a vacuum gauge comprises the reference of the casing, followed by the reference of the dial.

E.g.: Absolute Vacuum gauge D100mm aluminium, dry, vertical outlet, 1/4"SAE, 0+150mbar

Case: MA1501V14S; Dial: 6098 Reference: MA1501V14S-6098

# Blondelle 1 Lane Manifold with Vacuum Gauge



- Unique spindle valve, always tight without effort
- Class 1, 'A Lame Acier'
- Ø 60 & Ø 80 gauge
- Dry, oil filled or pulse-free (Ø 80 only)
- Available with the appropriate charging hoses

Supplied with gauge mounted on 1-way manifold including 2 yellow charging hoses, length 1 m with 1/4" SAE fitting. Options: safety valve, indicator needle, 1/4" SAE female fitting, ball valves.

Ø 60 Manifold Material	Vacuum gauge Type	Reference			Relative	Scales		
		Manifold	Scales	Options		Pseudo-absolute		
Aluminium	Dry Oil-filled	FR0801			-760 mmHg to 0		0+1000 mbar	
		FR1001						
			6099			-1000 mbar to 0		
			6103					
		6089						
				28	Description of the options			
				01	Safety valve (+60Bar)			
				V	Indicator needle (not for oilfilled)			
				AC	Charging hoses length 1m with ball valve			
					Anti-impact protection			

Ø 80 Manifold Material	Vacuum gauge Type	Reference			Relative	Scales		
		Manifold	Scales	Options		Pseudo-absolute		
Aluminium	Dry Oil-filled Pulse-free	FR0802			-760 mmHg to 0		0+1000 mbar	
		FR1002						
			6100			-1000 mbar to 0		
			6104					
		6090						
				28	Description of the options			
				01	Safety valve (+60Bar)			
				V	Indicator needle (not for oilfilled)			
				AC	Charging hoses length 1m with ball valve			
					Anti-impact protection			

**How to read the tables?**

The complete designation of a manifold comprises on the one hand the references of the manifold and vacuum gauge and on the other hand the reference of the scale.

E.g.: 1-lane aluminium manifold, 80mm gauge, oil filled, charging hoses length 1m with ball valve, scale:-1000mbar to 0: Manifold: FR1002; Scale: 6104; Reference: FR1002-6104-V